

Product Datasheet

ATF6 Antibody (orb1239223)

Description

ATF6 Antibody

Species/Host

Rabbit

Reactivity

Human, Mouse

Conjugation

Unconjugated

Tested

ELISA, ICC, IF, IHC-P, WB

Applications
Immunogen

ATF6 antibody was raised against a 16 amino acid synthetic peptide from near the carboxy terminus of human ATF6. The immunogen is located within amino acids 470 - 520 of ATF6.

Target

ATF6

Preservatives

ATF6 Antibody is supplied in PBS containing 0.02% sodium azide.

Form/Appearance

Liquid

Concentration

1 mg/mL

Storage

ATF6 antibody can be stored at 4°C for three months and -20°C, stable for up to one year. As with all antibodies care should be taken to avoid repeated freeze thaw cycles. Antibodies should not be exposed to prolonged high temperatures.

Note

For research use only

Application notes

ATF6 antibody can be used for the detection of ATF6 by Western blot at 0.5 - 1 µg/mL. Antibody can also be used for immunohistochemistry starting at 5 µg/mL and immunocytochemistry starting at 10 µg/mL. For immunofluorescence start at 10 µg/mL. Antibody validated: Western Blot in mouse samples; Immunohistochemistry in human samples; Immunocytochemistry in human samples and Immunofluorescence in human samples. All other applications and species not yet tested.

Isotype

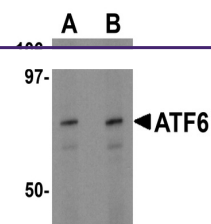
IgG

Clonality

Polyclonal

Uniprot ID
P18850
NCBI
NP_031374
Dilution Range

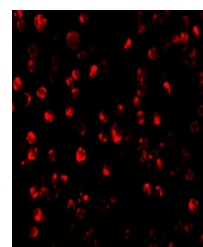
ATF6 antibody can be used for the detection of ATF6 by Western blot at 0.5 - 1 µg/mL. Antibody can also be used for immunohistochemistry starting at 5 µg/mL and immunocytochemistry starting at 10 µg/mL. For



Western blot analysis of ATF6 in EL4 cell...



Immunocytochemical staining of MCF7 cell...



Immunofluorescence of ATF6 in MCF7 cells...

Biorbyt Ltd.

7 Signet Court, Swann's Road, Cambridge, CB5 8LA, United Kingdom

Email: info@biorbyt.com | Phone: +44 (0) 1223 859-353 | Fax: +44 (0)1223 280 240

Biorbyt LLC.

68 TW Alexander Drive
Research Triangle Park
Durham, North Carolina
27709. United States

Email: info@biorbyt.com | Phone: +1 (415) 906-5211 | Fax: +1 (415) 651-8558

Expiration Date

12 months from date of receipt.