

---

## Product Datasheet

### GOPC Antibody (orb1239222)

**Description**

GOPC Antibody

**Species/Host**

Rabbit

**Reactivity**

Human, Mouse

**Conjugation**

Unconjugated

**Tested Applications**

ELISA, IF, IHC-P, WB

**Immunogen**

PIST antibody was raised against a 17 amino acid synthetic peptide from near the center of human PIST. The immunogen is located within amino acids 240 - 290 of PIST.

**Target**

GOPC

**Preservatives**

PIST Antibody is supplied in PBS containing 0.02% sodium azide.

**Form/Appearance**

Liquid

**Concentration**

1 mg/mL

**Storage**

PIST antibody can be stored at 4°C for three months and -20°C, stable for up to one year. As with all antibodies care should be taken to avoid repeated freeze thaw cycles. Antibodies should not be exposed to prolonged high temperatures.

**Note**

For research use only

**Application notes**

PIST antibody can be used for the detection of PIST by Western blot at 1 - 4 µg/mL. Antibody can also be used for immunohistochemistry starting at 1 µg/mL. For immunofluorescence start at 20 µg/mL. Antibody validated: Western Blot in human samples; Immunohistochemistry in rat samples and Immunofluorescence in rat samples. All other applications and species not yet tested.

**Isotype**

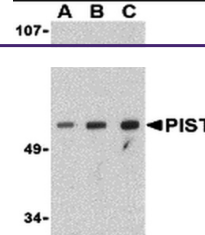
IgG

**Clonality**

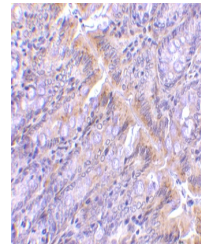
Polyclonal

**Uniprot ID**
[Q9HD26](#)
**NCBI**
[AAG00572](#)
**Dilution Range**

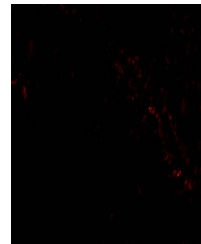
PIST antibody can be used for the detection of PIST by Western blot at 1 - 4 µg/mL. Antibody can also be used for immunohistochemistry starting at 1 µg/mL. For immunofluorescence start at 20 µg/mL. Antibody validated: Western Blot in human samples; Immunohistochemistry in rat samples and



Western blot analysis of PIST in PC-3 ce...



Immunohistochemistry of PIST in rat colo...



Immunofluorescence of PIST in Rat Colon ...