
Product Datasheet

PIWIL1 Antibody (orb1239221)

Description

PIWIL1 Antibody

Species/Host

Rabbit

Reactivity

Human, Mouse, Rat

Conjugation

Unconjugated

Tested

ELISA, IF, IHC-P, WB

Applications
Immunogen

PIWI-L1 antibody was raised against an 18 amino acid synthetic peptide near the amino terminus of human PIWI-L1. The immunogen is located within amino acids 60 - 110 of PIWI-L1.

Target

PIWIL1

Preservatives

PIWI-L1 Antibody is supplied in PBS containing 0.02% sodium azide.

Form/Appearance

Liquid

Concentration

1 mg/mL

Storage

PIWI-L1 antibody can be stored at 4°C for three months and -20°C, stable for up to one year. As with all antibodies care should be taken to avoid repeated freeze thaw cycles. Antibodies should not be exposed to prolonged high temperatures.

Note

For research use only

Application notes

PIWI-L1 antibody can be used for detection of PIWI-L1 by Western blot at 1 µg/mL. Antibody can also be used for immunohistochemistry starting at 10 µg/mL. For immunofluorescence start at 20 µg/mL. Antibody validated: Western Blot in human samples; Immunohistochemistry in rat samples and Immunofluorescence in rat samples. All other applications and species not yet tested.

Isotype

IgG

Clonality

Polyclonal

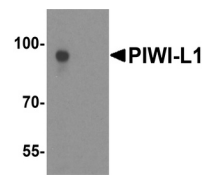
MW

Predicted: 85, 90 kDa Observed: 95 kDa

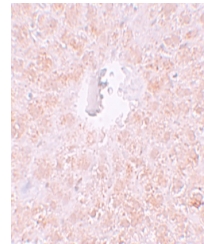
Uniprot ID
[Q96J94](#)
NCBI
[AAK69348](#)
Dilution Range

PIWI-L1 antibody can be used for detection of PIWI-L1 by Western blot at 1 µg/mL. Antibody can also be used for immunohistochemistry starting at 10 µg/mL. For immunofluorescence start at 20 µg/mL. Antibody validated: Western Blot in human

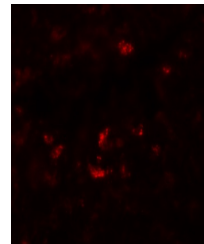
A B



Western blot analysis of PIWI-L1 in huma...



Immunohistochemistry of PIWI-L1 in rat liv...



Immunofluorescence of PIWI-L1 in rat liv...