

---

## Product Datasheet

### ASAH1 Antibody (orb1239216)

**Description**

ASAH1 Antibody

**Species/Host**

Rabbit

**Reactivity**

Human, Mouse, Rat

**Conjugation**

Unconjugated

**Tested Applications**

ELISA, IF, IHC-P, WB

**Immunogen**

ASAH1 antibody was raised against a 16 amino acid synthetic peptide near the carboxy terminus of the human ASAH1. The immunogen is located within amino acids 240 - 290 of ASAH1.

**Target**

ASAH1

**Preservatives**

ASAH1 Antibody is supplied in PBS containing 0.02% sodium azide.

**Form/Appearance**

Liquid

**Concentration**

1 mg/mL

**Storage**

ASAH1 antibody can be stored at 4°C for three months and -20°C, stable for up to one year. As with all antibodies care should be taken to avoid repeated freeze thaw cycles. Antibodies should not be exposed to prolonged high temperatures.

**Note**

For research use only

**Application notes**

ASAH1 antibody can be used for detection of ASAH1 by Western blot at 1 and 2 µg/mL. Antibody can also be used for immunohistochemistry starting at 2.5 µg/mL. For immunofluorescence start at 20 µg/mL. Antibody validated: Western Blot in human samples; Immunohistochemistry in human and rat samples and Immunofluorescence in human and rat samples. All other applications and species not yet tested.

**Isotype**

IgG

**Clonality**

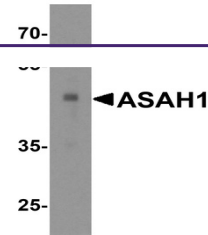
Polyclonal

**MW**

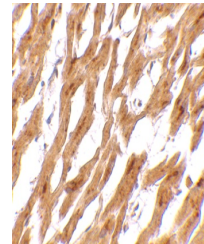
Predicted: 45 kDa Observed: 49 kDa

**Uniprot ID**
[Q13510](#)
**NCBI**
[EAW63795](#)
**Dilution Range**

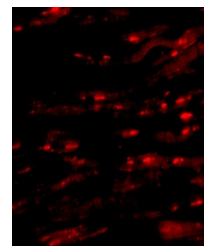
ASAH1 antibody can be used for detection of ASAH1 by Western blot at 1 and 2 µg/mL. Antibody can also be used for immunohistochemistry starting at 2.5 µg/mL. For immunofluorescence start at 20



Western blot analysis of ASAH1 in human ...



Immunohistochemistry of ASAH1 in human h...



Immunofluorescence of ASAH1 in Human Hea...