

---

## Product Datasheet

### TINCR Antibody (orb1239213)

**Description**

TINCR Antibody

**Species/Host**

Rabbit

**Reactivity**

Human

**Conjugation**

Unconjugated

**Tested Applications**

ELISA, ICC, IF, WB

**Immunogen**

PLAC2 antibody was raised against a 17 amino acid synthetic peptide near the center of human PLAC2. The immunogen is located within amino acids 60 - 110 of PLAC2.

**Target**

TINCR

**Preservatives**

PLAC2 Antibody is supplied in PBS containing 0.02% sodium azide.

**Form/Appearance**

Liquid

**Concentration**

1 mg/mL

**Storage**

PLAC2 antibody can be stored at 4°C for three months and -20°C, stable for up to one year. As with all antibodies care should be taken to avoid repeated freeze thaw cycles. Antibodies should not be exposed to prolonged high temperatures.

**Note**

For research use only

**Application notes**

PLAC2 antibody can be used for detection of PLAC2 by Western blot at 1 - 2 µg/mL. Antibody can also be used for immunocytochemistry starting at 10 µg/mL. For immunofluorescence start at 20 µg/mL. Antibody validated: Western Blot in human samples; Immunocytochemistry in human samples and Immunofluorescence in human samples. All other applications and species not yet tested.

**Isotype**

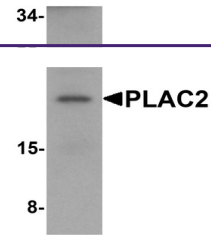
IgG

**Clonality**

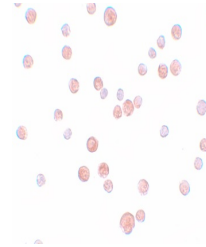
Polyclonal

**Uniprot ID**
[Q9NPR7](#)
**NCBI**
[AAQ15237](#)
**Dilution Range**

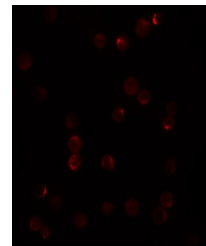
PLAC2 antibody can be used for detection of PLAC2 by Western blot at 1 - 2 µg/mL. Antibody can also be used for immunocytochemistry starting at 10 µg/mL. For immunofluorescence start at 20 µg/mL. Antibody validated: Western Blot in human samples; Immunocytochemistry in human samples and



Western blot analysis of PLAC2 in HeLa c...



Immunocytochemistry of PLAC2 in HeLa cel...



Immunofluorescence of PLAC2 in HeLa cell...