

---

## Product Datasheet

### PAPPA2 Antibody (orb1239212)

**Description**

PAPPA2 Antibody

**Species/Host**

Rabbit

**Reactivity**

Human, Mouse, Rat

**Conjugation**

Unconjugated

**Tested Applications**

ELISA, ICC, IF, WB

**Immunogen**

PLAC3 antibody was raised against a 15 amino acid synthetic peptide near the amino terminus of human PLAC3. The immunogen is located within amino acids 450 - 500 of PLAC3.

**Target**

PAPPA2

**Preservatives**

PLAC3 Antibody is supplied in PBS containing 0.02% sodium azide.

**Form/Appearance**

Liquid

**Concentration**

1 mg/mL

**Storage**

PLAC3 antibody can be stored at 4°C for three months and -20°C, stable for up to one year. As with all antibodies care should be taken to avoid repeated freeze thaw cycles. Antibodies should not be exposed to prolonged high temperatures.

**Note**

For research use only

**Application notes**

PLAC3 antibody can be used for detection of PLAC3 by Western blot at 1 µg/mL. Antibody can also be used for immunocytochemistry starting at 10 µg/mL. For immunofluorescence start at 20 µg/mL. Antibody validated: Western Blot in human samples; Immunocytochemistry in human samples and Immunofluorescence in human samples. All other applications and species not yet tested.

**Isotype**

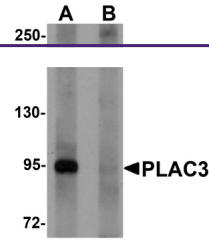
IgG

**Clonality**

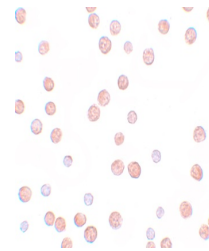
Polyclonal

**Uniprot ID**
[Q9BXP8](#)
**NCBI**
[NP\\_064714](#)
**Dilution Range**

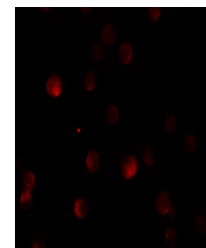
PLAC3 antibody can be used for detection of PLAC3 by Western blot at 1 µg/mL. Antibody can also be used for immunocytochemistry starting at 10 µg/mL. For immunofluorescence start at 20 µg/mL. Antibody validated: Western Blot in human samples; Immunocytochemistry in human samples and



Western blot analysis of PLAC3 in HeLa c...



Immunocytochemistry of PLAC3 in HeLa cel...



Immunofluorescence of PLAC3 in HeLa cell...