

---

## Product Datasheet

### PLAC4 Antibody (orb1239211)

**Description**

PLAC4 Antibody

**Species/Host**

Rabbit

**Reactivity**

Human

**Conjugation**

Unconjugated

**Tested Applications**

ELISA, ICC, IF, WB

**Immunogen**

PLAC4 antibody was raised against a 17 amino acid synthetic peptide near the center of human PLAC4. The immunogen is located within amino acids 20 - 70 of PLAC4.

**Target**

PLAC4

**Preservatives**

PLAC4 Antibody is supplied in PBS containing 0.02% sodium azide.

**Form/Appearance**

Liquid

**Concentration**

1 mg/mL

**Storage**

PLAC4 antibody can be stored at 4°C for three months and -20°C, stable for up to one year. As with all antibodies care should be taken to avoid repeated freeze thaw cycles. Antibodies should not be exposed to prolonged high temperatures.

**Note**

For research use only

**Application notes**

PLAC4 antibody can be used for detection of PLAC4 by Western blot at 1 - 2 µg/mL. Antibody can also be used for immunocytochemistry starting at 10 µg/mL. For immunofluorescence start at 20 µg/mL. Antibody validated: Western Blot in human samples; Immunocytochemistry in human samples and Immunofluorescence in human samples. All other applications and species not yet tested.

**Isotype**

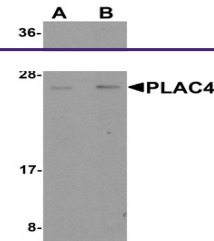
IgG

**Clonality**

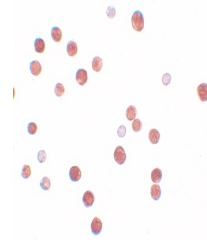
Polyclonal

**Uniprot ID**
[Q8WY50](#)
**NCBI**
[NP\\_878252](#)
**Dilution Range**

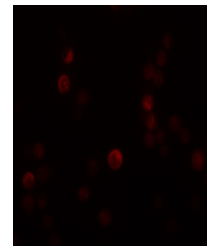
PLAC4 antibody can be used for detection of PLAC4 by Western blot at 1 - 2 µg/mL. Antibody can also be used for immunocytochemistry starting at 10 µg/mL. For immunofluorescence start at 20 µg/mL. Antibody validated: Western Blot in human samples; Immunocytochemistry in human samples and



Western blot analysis of PLAC4 in human ...



Immunocytochemistry of PLAC4 in HeLa cel...



Immunofluorescence of PLAC4 in HeLa cell...