
Product Datasheet

PLEKHM1 Antibody (orb1239209)

Description

PLEKHM1 Antibody

Species/Host

Rabbit

Reactivity

Human

Conjugation

Unconjugated

Tested

ELISA, IF, IHC-P, WB

Applications
Immunogen

PLEKHM1 antibody was raised against an 18 amino acid synthetic peptide from near the amino terminus of human PLEKHM1. The immunogen is located within amino acids 50 - 100 of PLEKHM1.

Target

PLEKHM1

Preservatives

PLEKHM1 Antibody is supplied in PBS containing 0.02% sodium azide.

Form/Appearance

Liquid

Concentration

1 mg/mL

Storage

PLEKHM1 antibody can be stored at 4°C for three months and -20°C, stable for up to one year. As with all antibodies care should be taken to avoid repeated freeze thaw cycles. Antibodies should not be exposed to prolonged high temperatures.

Note

For research use only

Application notes

PLEKHM1 antibody can be used for detection of PLEKHM1 by Western blot at 1 µg/mL. Antibody can also be used for immunohistochemistry starting at 5 µg/mL. For immunofluorescence start at 20 µg/mL. Antibody validated: Western Blot in human samples; Immunohistochemistry in human samples and Immunofluorescence in human samples. All other applications and species not yet tested.

Isotype

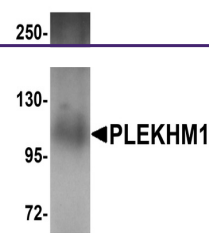
IgG

Clonality

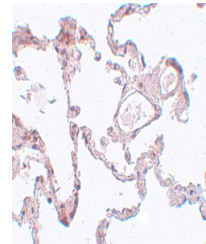
Polyclonal

Uniprot ID
[Q9Y4G2](#)
NCBI
[Q9Y4G2](#)
Dilution Range

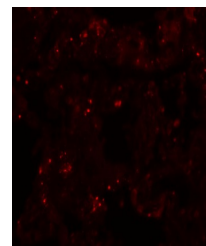
PLEKHM1 antibody can be used for detection of PLEKHM1 by Western blot at 1 µg/mL. Antibody can also be used for immunohistochemistry starting at 5 µg/mL. For immunofluorescence start at 20 µg/mL. Antibody validated: Western Blot in human samples; Immunohistochemistry in human samples



Western blot analysis of PLEKHM1 in huma...



Immunohistochemistry of PLEKHM1 in human...



Immunofluorescence of PLKHM1 in human lu...