
Product Datasheet

PLEKHM2 Antibody (orb1239208)

Description

PLEKHM2 Antibody

Species/Host

Rabbit

Reactivity

Human, Mouse, Rat

Conjugation

Unconjugated

Tested Applications

ELISA, IF, IHC-P, WB

Immunogen

PLEKHM2 antibody was raised against a 17 amino acid synthetic peptide from near the carboxy terminus of human PLEKHM2. The immunogen is located within the last 50 amino acids of PLEKHM2.

Target

PLEKHM2

Preservatives

PLEKHM2 Antibody is supplied in PBS containing 0.02% sodium azide.

Form/Appearance

Liquid

Concentration

1 mg/mL

Storage

PLEKHM2 antibody can be stored at 4°C for three months and -20°C, stable for up to one year. As with all antibodies care should be taken to avoid repeated freeze thaw cycles. Antibodies should not be exposed to prolonged high temperatures.

Note

For research use only

Application notes

PLEKHM2 antibody can be used for detection of PLEKHM2 by Western blot at 0.5 µg/mL. Antibody can also be used for immunohistochemistry starting at 5 µg/mL. For immunofluorescence start at 20 µg/mL. Antibody validated: Western Blot in rat samples; Immunohistochemistry in human samples and Immunofluorescence in human samples. All other applications and species not yet tested.

Isotype

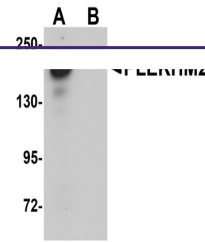
IgG

Clonality

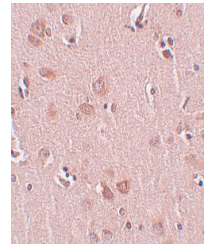
Polyclonal

Uniprot ID
[Q8IWE5](#)
NCBI
[CAH72018](#)
Dilution Range

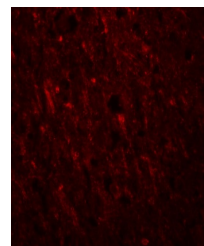
PLEKHM2 antibody can be used for detection of PLEKHM2 by Western blot at 0.5 µg/mL. Antibody can also be used for immunohistochemistry starting at 5 µg/mL. For immunofluorescence start at 20 µg/mL. Antibody validated: Western Blot in rat samples; Immunohistochemistry in human samples



Western blot analysis of PLEKHM2 in rat ...



Immunohistochemistry of PLEKHM2 in human...



Immunofluorescence of PLEKHM2 in Human B...