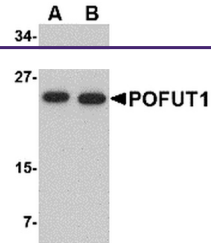
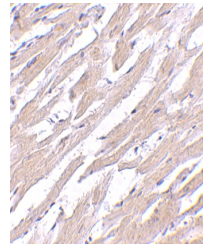

Product Datasheet

POFUT1 Antibody (orb1239203)

Description	POFUT1 Antibody
Species/Host	Rabbit
Reactivity	Human, Mouse
Conjugation	Unconjugated
Tested Applications	ELISA, IHC-P, WB
Immunogen	POFUT1 antibody was raised against a 16 amino acid synthetic peptide from near the amino terminus of human POFUT1. The immunogen is located within amino acids 90 - 140 of POFUT1.
Target	POFUT1
Preservatives	POFUT1 Antibody is supplied in PBS containing 0.02% sodium azide.
Form/Appearance	Liquid
Concentration	1 mg/mL
Storage	POFUT1 antibody can be stored at 4°C for three months and -20°C, stable for up to one year. As with all antibodies care should be taken to avoid repeated freeze thaw cycles. Antibodies should not be exposed to prolonged high temperatures.
Note	For research use only
Application notes	POFUT1 antibody can be used for the detection of POFUT1 by Western blot at 0.5 - 1 µg/mL. Antibody can also be used for immunohistochemistry starting at 2.5 µg/mL. Antibody validated: Western Blot in human samples and Immunohistochemistry in human samples. All other applications and species not yet tested.
Isotype	IgG
Clonality	Polyclonal
Uniprot ID	Q9H488
NCBI	NP_056167
Dilution Range	POFUT1 antibody can be used for the detection of POFUT1 by Western blot at 0.5 - 1 µg/mL. Antibody can also be used for immunohistochemistry starting at 2.5 µg/mL. Antibody validated: Western Blot in human samples and Immunohistochemistry in human samples. All other applications and species not yet tested.



Western blot analysis of POFUT1 in human...



Immunohistochemistry of POFUT1 in human

...