

---

## Product Datasheet

### POLR3F Antibody (orb1239202)

**Description**

POLR3F Antibody

**Species/Host**

Rabbit

**Reactivity**

Human, Mouse, Rat

**Conjugation**

Unconjugated

**Tested Applications**

ELISA, IF, IHC-P, WB

**Applications**
**Immunogen**

POLR3F antibody was raised against a 21 amino acid synthetic peptide from near the amino terminus of human POLR3F. The immunogen is located within the first 50 amino acids of POLR3F.

**Target**

POLR3F

**Preservatives**

POLR3F Antibody is supplied in PBS containing 0.02% sodium azide.

**Form/Appearance**

Liquid

**Concentration**

1 mg/mL

**Storage**

POLR3F antibody can be stored at 4°C for three months and -20°C, stable for up to one year. As with all antibodies care should be taken to avoid repeated freeze thaw cycles. Antibodies should not be exposed to prolonged high temperatures.

**Note**

For research use only

**Application notes**

POLR3F antibody can be used for detection of POLR3F by Western blot at 0.5 - 1 µg/mL. Antibody can also be used for immunohistochemistry starting at 2.5 µg/mL. For immunofluorescence start at 20 µg/mL. Antibody validated: Western Blot in human samples; Immunohistochemistry in human samples and Immunofluorescence in human samples. All other applications and species not yet tested.

**Isotype**

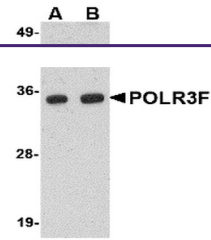
IgG

**Clonality**

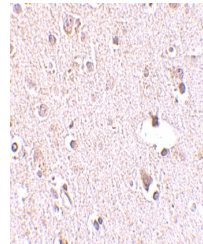
Polyclonal

**Uniprot ID**
[Q9H1D9](#)
**NCBI**
[CAC11110](#)
**Dilution Range**

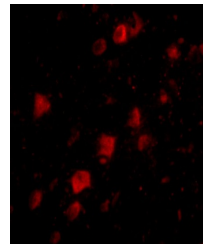
POLR3F antibody can be used for detection of POLR3F by Western blot at 0.5 - 1 µg/mL. Antibody can also be used for immunohistochemistry starting at 2.5 µg/mL. For immunofluorescence start at 20 µg/mL. Antibody validated: Western Blot in human samples; Immunohistochemistry in human samples



Western blot analysis of POLR3F in human...



Immunohistochemistry of POLR3F in human ...



Immunofluorescence of POLR3F in human br...