
Product Datasheet

APP Antibody (orb1239195)

Description

APP Antibody

Species/Host

Rabbit

Reactivity

Human, Mouse, Rat

Conjugation

Unconjugated

Tested Applications

ELISA, IF, IHC-P, WB

Immunogen

APP antibody was raised against a 15 amino acid peptide near the carboxy terminus of human APP. The immunogen is located within the last 50 amino acids of APP.

Target

APP

Preservatives

APP Antibody is supplied in PBS containing 0.02% sodium azide.

Form/Appearance

Liquid

Concentration

1 mg/ml

Storage

APP antibody can be stored at 4°C up to one year. Antibodies should not be exposed to prolonged high temperatures.

Note

For research use only

Application notes

APP antibody can be used for detection of APP and the C99 fragment by Western blot at 0.5 - 1 µg/mL. Antibody can also be used for immunohistochemistry starting at 2 µg/mL. For immunofluorescence start at 20 µg/mL. Antibody validated: Western Blot in mouse samples; Immunohistochemistry in mouse and rat samples and Immunofluorescence in mouse and rat samples. All other applications and species not yet tested.

Isotype

IgG

Clonality

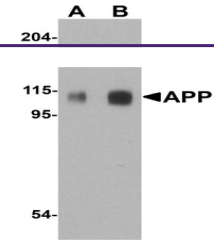
Polyclonal

MW

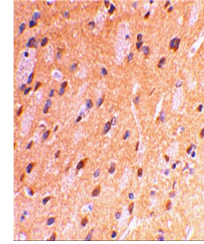
Predicted: 83 kDa Observed: 110 kDa

Uniprot ID
[P05067](#)
NCBI
[CAA30050](#)
Dilution Range

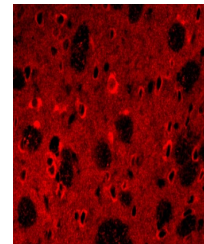
APP antibody can be used for detection of APP and the C99 fragment by Western blot at 0.5 - 1 µg/mL. Antibody can also be used for immunohistochemistry starting at 2 µg/mL. For immunofluorescence start at 20 µg/mL. Antibody validated: Western Blot in mouse samples; Immunohistochemistry in mouse and rat



Western blot analysis of APP in mouse br...



Immunohistochemical staining of rat brai...



Immunofluorescence of APP in Rat Brain C...