

---

## Product Datasheet

### ALB Antibody (orb1239194)

**Description**

ALB Antibody

**Species/Host**

Gallus

**Reactivity**

Human, Mouse, Rat

**Conjugation**

Unconjugated

**Tested Applications**

ELISA, IF, IHC-P, WB

**Immunogen**

Albumin antibody was raised against a 13 amino acid synthetic peptide near the center of human Albumin. The immunogen is located within amino acids 340 - 390 of Albumin.

**Target**

ALB

**Preservatives**

Albumin Antibody is supplied in PBS containing 0.02% sodium azide.

**Form/Appearance**

Liquid

**Concentration**

1 mg/mL

**Storage**

Albumin antibody can be stored at 4°C up to one year. Antibodies should not be exposed to prolonged high temperatures.

**Note**

For research use only

**Application notes**

Albumin antibody can be used for detection of Albumin by Western blot at 1 - 2 µg/mL. Antibody can also be used for immunohistochemistry starting at 2.5 µg/mL. For immunofluorescence start at 20 µg/mL. Antibody validated: Western Blot in human and mouse samples; Immunohistochemistry in human and mouse samples and Immunofluorescence in human and mouse samples. All other applications and species not yet tested.

**Isotype**

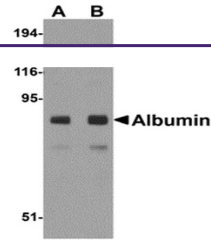
IgY

**Clonality**

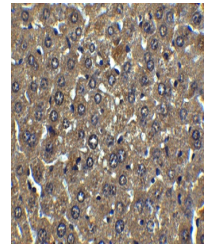
Polyclonal

**Uniprot ID**
**P02768**
**NCBI**
**P02768**
**Dilution Range**

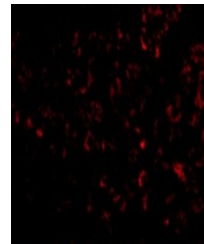
Albumin antibody can be used for detection of Albumin by Western blot at 1 - 2 µg/mL. Antibody can also be used for immunohistochemistry starting at 2.5 µg/mL. For immunofluorescence start at 20 µg/mL. Antibody validated: Western Blot in human and mouse samples; Immunohistochemistry in human and mouse samples and Immunofluorescence in human



Western blot analysis of Albumin in mouse...



Immunohistochemistry of Albumin in mouse...



Immunofluorescence of Albumin in mouse I...