
Product Datasheet

PPM1D Antibody (orb1239193)

Description

PPM1D Antibody

Species/Host

Rabbit

Reactivity

Human, Mouse, Rat

Conjugation

Unconjugated

Tested Applications

ELISA, IF, IHC-P, WB

Immunogen

PPM1D antibody was raised against an 18 amino acid peptide near the carboxy terminus of human PPM1D. The immunogen is located within the last 50 amino acids of PPM1D.

Target

PPM1D

Preservatives

PPM1D antibody is supplied in PBS containing 0.02% sodium azide.

Form/Appearance

Liquid

Concentration

1 mg/mL

Storage

PPM1D antibody can be stored at 4°C for three months and -20°C, stable for up to one year.

Note

For research use only

Application notes

PPM1D antibody can be used for detection of PPM1D by Western blot at 1 - 2 µg/ml. Antibody can also be used for immunohistochemistry starting at 5 µg/mL. For immunofluorescence start at 20 µg/mL. Antibody validated: Western Blot in mouse samples; Immunohistochemistry in human samples and Immunofluorescence in human samples. All other applications and species not yet tested.

Isotype

IgG

Clonality

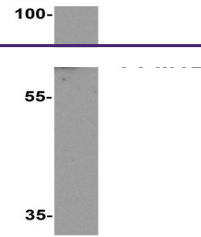
Polyclonal

MW

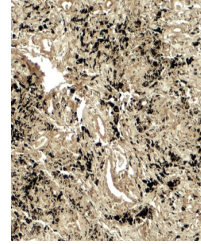
Predicted: 67 kDa Observed: 68 kDa

Uniprot ID
[Q81VR6](#)
NCBI
[NP_003611](#)
Dilution Range

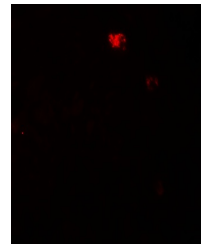
PPM1D antibody can be used for detection of PPM1D by Western blot at 1 - 2 µg/ml. Antibody can also be used for immunohistochemistry starting at 5 µg/mL. For immunofluorescence start at 20 µg/mL. Antibody validated: Western Blot in mouse samples; Immunohistochemistry in human samples and Immunofluorescence in human samples. All other applications and species not yet tested.



Western blot analysis of PPM1D in 3T3 ce...



Immunohistochemistry of PPM1D in human l...



Immunofluorescence of PPM1D in human lun...