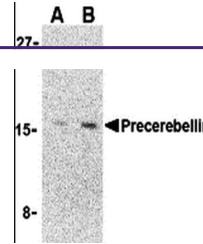
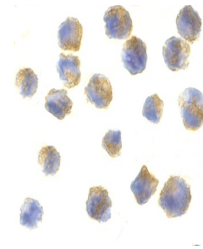

Product Datasheet

CBLN1 Antibody (orb1239190)

Description	CBLN1 Antibody
Species/Host	Rabbit
Reactivity	Human, Mouse, Rat
Conjugation	Unconjugated
Tested Applications	ELISA, ICC, WB
Immunogen	Precerebellin antibody was raised against a 16 amino acid synthetic peptide from near the carboxy-terminus human precerebellin. The immunogen is located within the last 50 amino acids of Precerebellin.
Target	CBLN1
Preservatives	Precerebellin Antibody is supplied in PBS containing 0.02% sodium azide.
Form/Appearance	Liquid
Concentration	1 mg/mL
Storage	Precerebellin antibody can be stored at 4°C for three months and -20°C, stable for up to one year. As with all antibodies care should be taken to avoid repeated freeze thaw cycles. Antibodies should not be exposed to prolonged high temperatures.
Note	For research use only
Application notes	Precerebellin antibody can be used for the detection of precerebellin by Western blot at 2 - 4 µg/mL. Antibody can also be used for immunocytochemistry starting at 10 µg/mL. Antibody validated: Western Blot in human samples and Immunocytochemistry in mouse samples. All other applications and species not yet tested.
Isotype	IgG
Clonality	Polyclonal
Uniprot ID	P23435
NCBI	P23435
Dilution Range	Precerebellin antibody can be used for the detection of precerebellin by Western blot at 2 - 4 µg/mL. Antibody can also be used for immunocytochemistry starting at 10 µg/mL. Antibody validated: Western Blot in human samples and Immunocytochemistry in mouse samples. All other applications and species



Western blot analysis of precerebellin i...



Immunocytochemistry of precerebellin in ...