

---

## Product Datasheet

### CBLN1 Antibody (orb1239189)

**Description**

CBLN1 Antibody

**Species/Host**

Rabbit

**Reactivity**

Human, Mouse, Rat

**Conjugation**

Unconjugated

**Tested Applications**

ELISA, IHC-P, WB

**Immunogen**

Precerebellin antibody was raised against a 15 amino acid synthetic peptide from the middle of human precerebellin. The immunogen is located within amino acids 50 - 100 of Precerebellin.

**Target**

CBLN1

**Preservatives**

Precerebellin Antibody is supplied in PBS containing 0.02% sodium azide.

**Form/Appearance**

Liquid

**Concentration**

1 mg/mL

**Storage**

Precerebellin antibody can be stored at 4°C for three months and -20°C, stable for up to one year. As with all antibodies care should be taken to avoid repeated freeze thaw cycles. Antibodies should not be exposed to prolonged high temperatures.

**Note**

For research use only

**Application notes**

Precerebellin antibody can be used for the detection of precerebellin by Western blot at 2 - 4 µg/mL. Antibody can also be used for immunohistochemistry starting at 2 µg/mL. Antibody validated: Western Blot in mouse samples and Immunohistochemistry in rat samples. All other applications and species not yet tested.

**Isotype**

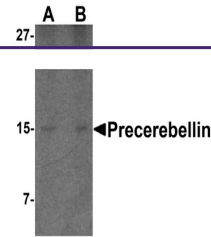
IgG

**Clonality**

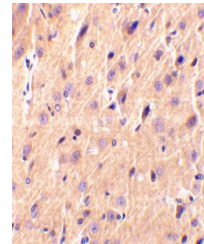
Polyclonal

**Uniprot ID**
[P23435](#)
**NCBI**
[P23435](#)
**Dilution Range**

Precerebellin antibody can be used for the detection of precerebellin by Western blot at 2 - 4 µg/mL. Antibody can also be used for immunohistochemistry starting at 2 µg/mL. Antibody validated: Western Blot in mouse samples and Immunohistochemistry in rat samples. All other applications and species not yet tested.



Western blot analysis of precerebellin i...



Immunohistochemical staining of rat brai...