

---

## Product Datasheet

### PSEN1 Antibody (orb1239188)

**Description**

PSEN1 Antibody

**Species/Host**

Rabbit

**Reactivity**

Human, Mouse, Rat

**Conjugation**

Unconjugated

**Tested**

ELISA, IF, IHC-P, WB

**Applications**
**Immunogen**

Presenilin1 antibody was raised against a 23 amino acid synthetic peptide from near the carboxy terminus of human presenilin1. The immunogen is located within amino acids 330 - 380 of Presenilin1.

**Target**

PSEN1

**Preservatives**

Presenilin1 Antibody is supplied in PBS containing 0.02% sodium azide.

**Form/Appearance**

Liquid

**Concentration**

1 mg/mL

**Storage**

Presenilin1 antibody can be stored at 4°C for three months and -20°C, stable for up to one year. As with all antibodies care should be taken to avoid repeated freeze thaw cycles. Antibodies should not be exposed to prolonged high temperatures.

**Note**

For research use only

**Application notes**

Presenilin1 antibody can be used for detection of presenilin1 by Western blot at 0.5 - 2 µg/mL. Antibody can also be used for immunohistochemistry starting at 2.5 µg/mL. For immunofluorescence start at 20 µg/mL. Antibody validated: Western Blot in human samples; Immunohistochemistry in human samples and Immunofluorescence in human samples. All other applications and species not yet tested.

**Isotype**

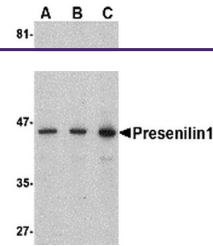
IgG

**Clonality**

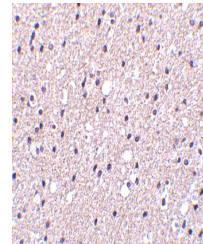
Polyclonal

**Uniprot ID**
[P49768](#)
**NCBI**
[NP\\_000012](#)
**Dilution Range**

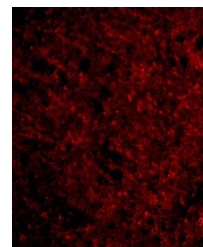
Presenilin1 antibody can be used for detection of presenilin1 by Western blot at 0.5 - 2 µg/mL. Antibody can also be used for immunohistochemistry starting at 2.5 µg/mL. For immunofluorescence start at 20 µg/mL. Antibody validated: Western Blot in



Western blot analysis of presenilin1 in ...



Immunohistochemistry of Presenilin1 in h...



Immunofluorescence of Presenilin1 in Hum...