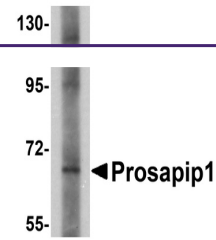
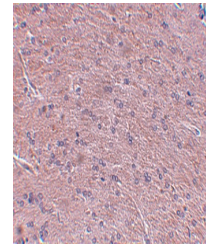

Product Datasheet

ProSAPiP1 Antibody (orb1239182)

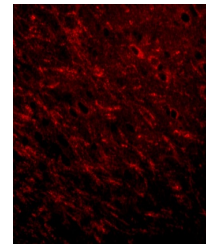
Description	ProSAPiP1 Antibody
Species/Host	Rabbit
Reactivity	Human, Mouse, Rat
Conjugation	Unconjugated
Tested Applications	ELISA, IF, IHC-P, WB
Immunogen	Prosapip1 antibody was raised against a 16 amino acid synthetic peptide from near the carboxy terminus of human Prosapip1. The immunogen is located within amino acids 590 - 640 of Prosapip1.
Target	ProSAPiP1
Preservatives	Prosapip1 Antibody is supplied in PBS containing 0.02% sodium azide.
Form/Appearance	Liquid
Concentration	1 mg/mL
Storage	Prosapip1 antibody can be stored at 4°C for three months and -20°C, stable for up to one year. As with all antibodies care should be taken to avoid repeated freeze thaw cycles. Antibodies should not be exposed to prolonged high temperatures.
Note	For research use only
Application notes	Prosapip1 antibody can be used for detection of Prosapip1 by Western blot at 1 µg/mL. Antibody can also be used for immunohistochemistry starting at 2.5 µg/mL. For immunofluorescence start at 20 µg/mL. Antibody validated: Western Blot in human samples; Immunohistochemistry in rat samples and Immunofluorescence in rat samples. All other applications and species not yet tested.
Isotype	IgG
Clonality	Polyclonal
Uniprot ID	O60299
NCBI	NP_055546
Dilution Range	Prosapip1 antibody can be used for detection of Prosapip1 by Western blot at 1 µg/mL. Antibody can also be used for immunohistochemistry starting at 2.5 µg/mL. For immunofluorescence start at 20 µg/mL. Antibody validated: Western Blot in human samples; Immunohistochemistry in rat



Western blot analysis of Prosapip1 in SK...



Immunohistochemistry of Prosapip1 in rat...



Immunofluorescence of Prosapip 1 in rat ...