
Product Datasheet

TBKBP1 Antibody (orb1239181)

Description

TBKBP1 Antibody

Species/Host

Rabbit

Reactivity

Human, Mouse, Rat

Conjugation

Unconjugated

Tested

ELISA, IF, IHC-P, WB

Applications
Immunogen

Prosapip2 antibody was raised against a 16 amino acid synthetic peptide from near the carboxy terminus of human Prosapip2. The immunogen is located within amino acids 500 - 550 of Prosapip2.

Target

TBKBP1

Preservatives

Prosapip2 Antibody is supplied in PBS containing 0.02% sodium azide.

Form/Appearance

Liquid

Concentration

1 mg/mL

Storage

Prosapip2 antibody can be stored at 4°C for three months and -20°C, stable for up to one year. As with all antibodies care should be taken to avoid repeated freeze thaw cycles. Antibodies should not be exposed to prolonged high temperatures.

Note

For research use only

Application notes

Prosapip2 antibody can be used for detection of Prosapip2 by Western blot at 1 µg/mL. Antibody can also be used for immunohistochemistry starting at 5 µg/mL. For immunofluorescence start at 20 µg/mL. Antibody validated: Western Blot in rat samples; Immunohistochemistry in rat samples and Immunofluorescence in rat samples. All other applications and species not yet tested.

Isotype

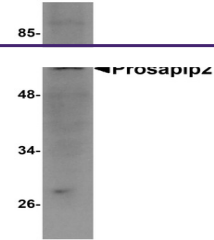
IgG

Clonality

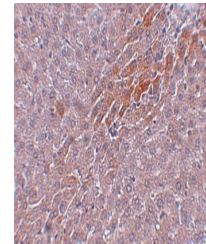
Polyclonal

Uniprot ID
[A7MCY6](#)
NCBI
[NP_055541](#)
Dilution Range

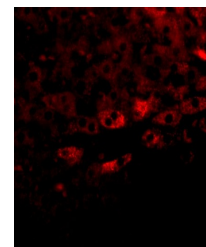
Prosapip2 antibody can be used for detection of Prosapip2 by Western blot at 1 µg/mL. Antibody can also be used for immunohistochemistry starting at 5 µg/mL. For immunofluorescence start at 20 µg/mL. Antibody validated: Western Blot in rat samples; Immunohistochemistry in rat samples and



Western blot analysis of Prosapip2 in ra...



Immunohistochemistry of Prosapip2 in rat...



Immunofluorescence of Prosapip 2 in rat ...