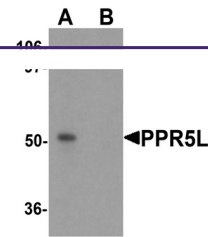

Product Datasheet

PRR5L Antibody (orb1239179)

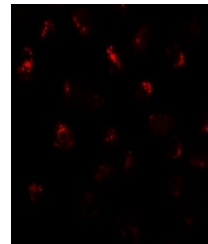
Description	PRR5L Antibody
Species/Host	Rabbit
Reactivity	Human, Mouse
Conjugation	Unconjugated
Tested Applications	ELISA, ICC, IF, WB
Immunogen	PRR5L antibody was raised against a 17 amino acid synthetic peptide near the center of human PRR5L. The immunogen is located within amino acids 220 - 270 of PRR5L.
Target	PRR5L
Preservatives	PRR5L Antibody is supplied in PBS containing 0.02% sodium azide.
Form/Appearance	Liquid
Concentration	1 mg/mL
Storage	PRR5L antibody can be stored at 4°C for three months and -20°C, stable for up to one year. As with all antibodies care should be taken to avoid repeated freeze thaw cycles. Antibodies should not be exposed to prolonged high temperatures.
Note	For research use only
Application notes	PRR5L antibody can be used for detection of PRR5L by Western blot at 1 µg/mL. Antibody can also be used for immunocytochemistry starting at 10 µg/mL. For immunofluorescence start at 20 µg/mL. Antibody validated: Western Blot in mouse samples; Immunocytochemistry in human samples and Immunofluorescence in mouse samples. All other applications and species not yet tested.
Isotype	IgG
Clonality	Polyclonal
Uniprot ID	Q6MZQ0
NCBI	NP_001153639
Dilution Range	PRR5L antibody can be used for detection of PRR5L by Western blot at 1 µg/mL. Antibody can also be used for immunocytochemistry starting at 10 µg/mL. For immunofluorescence start at 20 µg/mL. Antibody validated: Western Blot in mouse samples; Immunocytochemistry in human samples and



Western blot analysis of PRR5L in 3T3 ce...



Immunocytochemistry of PPR5L in 293 cell...



Immunofluorescence of PPR5L in 3T3 cells

...