
Product Datasheet

PTCHD2 Antibody (orb1239177)

Description

PTCHD2 Antibody

Species/Host

Rabbit

Reactivity

Human, Mouse, Rat

Conjugation

Unconjugated

Tested

ELISA, IF, IHC-P, WB

Applications
Immunogen

PTCHD2 antibody was raised against a 19 amino acid synthetic peptide from near the center of human PTCHD2. The immunogen is located within amino acids 780 - 830 of PTCHD2.

Target

PTCHD2

Preservatives

PTCHD2 Antibody is supplied in PBS containing 0.02% sodium azide.

Form/Appearance

Liquid

Concentration

1 mg/mL

Storage

PTCHD2 antibody can be stored at 4°C for three months and -20°C, stable for up to one year. As with all antibodies care should be taken to avoid repeated freeze thaw cycles. Antibodies should not be exposed to prolonged high temperatures.

Note

For research use only

Application notes

PTCHD2 antibody can be used for detection of EPAC1 by Western blot at 1 - 2 µg/mL. Antibody can also be used for immunohistochemistry starting at 2.5 µg/mL. For immunofluorescence start at 20 µg/mL. Antibody validated: Western Blot in mouse samples; Immunohistochemistry in human samples and Immunofluorescence in human samples. All other applications and species not yet tested.

Isotype

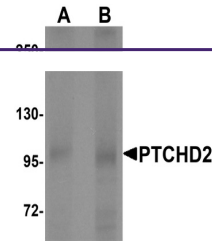
IgG

Clonality

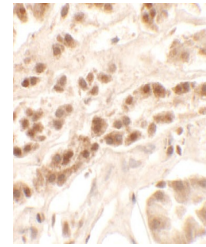
Polyclonal

Uniprot ID
[Q9P2K9](#)
NCBI
[Q9P2K9](#)
Dilution Range

PTCHD2 antibody can be used for detection of EPAC1 by Western blot at 1 - 2 µg/mL. Antibody can also be used for immunohistochemistry starting at 2.5 µg/mL. For immunofluorescence start at 20 µg/mL. Antibody validated: Western Blot in mouse samples; Immunohistochemistry in human samples

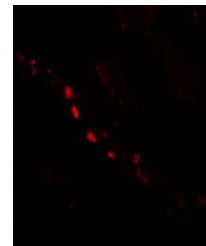


Western blot analysis of PTCHD2 in mouse...



Immunohistochemistry of PTCHD2 in human

...



Immunofluorescence of PTCHD2 in human ki...