
Product Datasheet

PTER Antibody (orb1239175)

Description

PTER Antibody

Species/Host

Rabbit

Reactivity

Human, Mouse, Rat

Conjugation

Unconjugated

Tested Applications

ELISA, IHC-P, WB

Immunogen

PTER antibody was raised against a 16 amino acid synthetic peptide from near the carboxy terminus of human PTER. The immunogen is located within amino acids 250 - 300 of PTER.

Target

PTER

Preservatives

PTER Antibody is supplied in PBS containing 0.02% sodium azide.

Form/Appearance

Liquid

Concentration

1 mg/mL

Storage

PTER antibody can be stored at 4°C for three months and -20°C, stable for up to one year. As with all antibodies care should be taken to avoid repeated freeze thaw cycles. Antibodies should not be exposed to prolonged high temperatures.

Note

For research use only

Application notes

PTER antibody can be used for detection of PTER by Western blot at 1 - 2 µg/mL. Antibody can also be used for immunohistochemistry starting at 2.5 µg/mL. Antibody validated: Western Blot in human samples and Immunohistochemistry in mouse samples. All other applications and species not yet tested.

Isotype

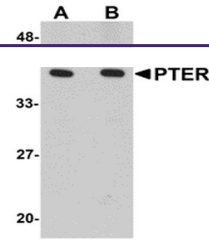
IgG

Clonality

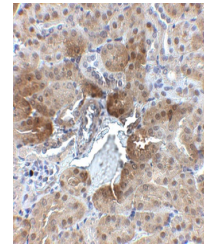
Polyclonal

Uniprot ID
[Q96BW5](#)
NCBI
[CAH73146](#)
Dilution Range

PTER antibody can be used for detection of PTER by Western blot at 1 - 2 µg/mL. Antibody can also be used for immunohistochemistry starting at 2.5 µg/mL. Antibody validated: Western Blot in human samples and Immunohistochemistry in mouse samples. All other applications and species not yet tested.



Western blot analysis of PTER in human k...



Immunohistochemistry of PTER in mouse ki...