

---

## Product Datasheet

### PTGDR2 Antibody (orb1239174)

**Description**

PTGDR2 Antibody

**Species/Host**

Rabbit

**Reactivity**

Human, Mouse

**Conjugation**

Unconjugated

**Tested Applications**

ELISA, IF, WB

**Immunogen**

Rabbit polyclonal PTGDR2 antibody was raised against a 19 amino acid peptide near the center of human PTGDR2. The immunogen is located within amino acids 320 - 370 of PTGDR2.

**Target**

PTGDR2

**Preservatives**

PTGDR2 Antibody is supplied in PBS containing 0.02% sodium azide.

**Form/Appearance**

Liquid

**Concentration**

1 mg/mL

**Storage**

PTGDR2 antibody can be stored at 4°C for three months and -20°C, stable for up to one year.

**Note**

For research use only

**Application notes**

PTGDR2 antibody can be used for detection of PTGDR2 by Western blot at 0.5 - 1 µg/mL. Antibody validated: Western Blot in human samples and Immunofluorescence in human samples. All other applications and species not yet tested.

**Isotype**

IgG

**Clonality**

Polyclonal

**MW**

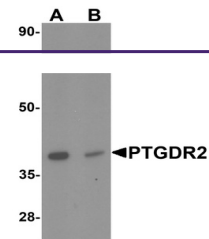
Predicted: 43 kDa

**Uniprot ID**
[Q9Y5Y4](https://www.uniprot.org/uniprot/Q9Y5Y4)
**NCBI**
[NP\\_004769](https://www.ncbi.nlm.nih.gov/nuccore/NP_004769)
**Dilution Range**

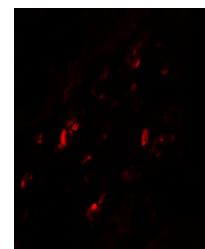
PTGDR2 antibody can be used for detection of PTGDR2 by Western blot at 0.5 - 1 µg/mL. Antibody validated: Western Blot in human samples and Immunofluorescence in human samples. All other applications and species not yet tested.

**Expiration Date**

12 months from date of receipt.



Western blot analysis of PTGDR2 in small...



Immunofluorescence of PTGDR2 in human sm...