

---

## Product Datasheet

### RANBP10 Antibody (orb1239161)

**Description**

RANBP10 Antibody

**Species/Host**

Rabbit

**Reactivity**

Human

**Conjugation**

Unconjugated

**Tested**

ELISA, IF, IHC-P, WB

**Applications**
**Immunogen**

RANBP10 antibody was raised against a 15 amino acid synthetic peptide near the center of human RANBP10. The immunogen is located within amino acids 380 - 430 of RANBP10.

**Target**

RANBP10

**Preservatives**

RANBP10 Antibody is supplied in PBS containing 0.02% sodium azide.

**Form/Appearance**

Liquid

**Concentration**

1 mg/mL

**Storage**

RANBP10 antibody can be stored at 4°C for three months and -20°C, stable for up to one year. As with all antibodies care should be taken to avoid repeated freeze thaw cycles. Antibodies should not be exposed to prolonged high temperatures.

**Note**

For research use only

**Application notes**

RANBP10 antibody can be used for detection of RANBP10 by Western blot at 1 - 2 µg/mL. Antibody can also be used for immunohistochemistry starting at 5 µg/mL. For immunofluorescence start at 20 µg/mL. Antibody validated: Western Blot in human samples; Immunohistochemistry in human samples and Immunofluorescence in mouse samples. All other applications and species not yet tested.

**Isotype**

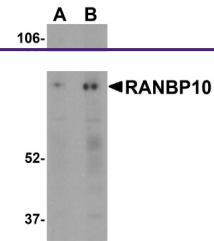
IgG

**Clonality**

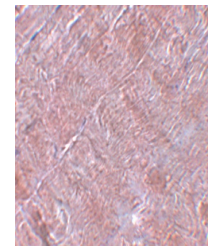
Polyclonal

**Uniprot ID**
[Q6VN20](#)
**NCBI**
[EAW83167](#)
**Dilution Range**

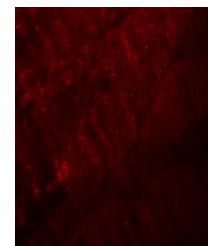
RANBP10 antibody can be used for detection of RANBP10 by Western blot at 1 - 2 µg/mL. Antibody can also be used for immunohistochemistry starting at 5 µg/mL. For immunofluorescence start at 20 µg/mL. Antibody validated: Western Blot in human samples; Immunohistochemistry in human samples



Western blot analysis of RANBP10 in huma...



Immunohistochemistry of RANBP10 in human...



Immunofluorescence of RANBP10 in mouse S...