
Product Datasheet

UIMC1 Antibody (orb1239160)

Description

UIMC1 Antibody

Species/Host

Rabbit

Reactivity

Human, Mouse

Conjugation

Unconjugated

Tested Applications

ELISA, IF, IHC-P, WB

Immunogen

RAP80 antibody was raised against a 17 amino acid synthetic peptide from near the carboxy terminus of human RAP80. The immunogen is located within amino acids 520 - 570 of RAP80.

Target

UIMC1

Preservatives

RAP80 Antibody is supplied in PBS containing 0.02% sodium azide.

Form/Appearance

Liquid

Concentration

1 mg/mL

Storage

RAP80 antibody can be stored at 4°C for three months and -20°C, stable for up to one year. As with all antibodies care should be taken to avoid repeated freeze thaw cycles. Antibodies should not be exposed to prolonged high temperatures.

Note

For research use only

Application notes

RAP80 antibody can be used for detection of RAP80 by Western blot at 2 µg/mL. Antibody can also be used for immunohistochemistry starting at 2.5 µg/mL. For immunofluorescence start at 20 µg/mL. Antibody validated: Western Blot in human samples; Immunohistochemistry in human samples and Immunofluorescence in human samples. All other applications and species not yet tested.

Isotype

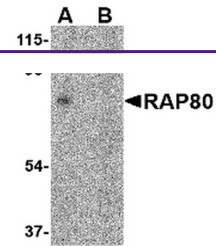
IgG

Clonality

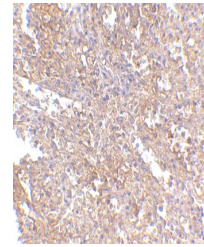
Polyclonal

Uniprot ID
[Q96RL1](#)
NCBI
[EAW85043](#)
Dilution Range

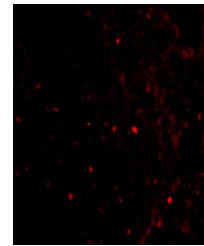
RAP80 antibody can be used for detection of RAP80 by Western blot at 2 µg/mL. Antibody can also be used for immunohistochemistry starting at 2.5 µg/mL. For immunofluorescence start at 20 µg/mL. Antibody validated: Western Blot in human samples; Immunohistochemistry in human samples



Western blot analysis of RAP80 in 293 ce...



Immunohistochemistry of RAP80 in human s...



Immunofluorescence of RAP80 in Human Spl...