
Product Datasheet

Rptor Antibody (orb1239156)

Description

Rptor Antibody

Species/Host

Rabbit

Reactivity

Human, Mouse

Conjugation

Unconjugated

Tested

ELISA, ICC, IF, WB

Applications
Immunogen

Raptor antibody was raised against a 15 amino acid synthetic peptide from the central region of human Raptor. The immunogen is located within amino acids 910 - 960 of Raptor.

Target

Rptor

Preservatives

Raptor Antibody is supplied in PBS containing 0.02% sodium azide.

Form/Appearance

Liquid

Concentration

1 mg/mL

Storage

Raptor antibody can be stored at 4°C for three months and -20°C, stable for up to one year. As with all antibodies care should be taken to avoid repeated freeze thaw cycles. Antibodies should not be exposed to prolonged high temperatures.

Note

For research use only

Application notes

Raptor antibody can be used for the detection of Raptor by Western blot at 2 and 4 µg/mL. Antibody can also be used for immunocytochemistry starting at 1 µg/mL. For immunofluorescence start at 10 µg/mL. Antibody validated: Western Blot in mouse samples; Immunocytochemistry in mouse samples and Immunofluorescence in mouse samples. All other applications and species not yet tested.

Isotype

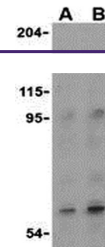
IgG

Clonality

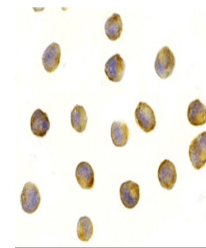
Polyclonal

Uniprot ID
[Q8K4Q0](#)
NCBI
[Q8K4Q0](#)
Dilution Range

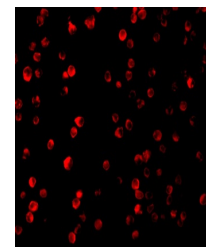
Raptor antibody can be used for the detection of Raptor by Western blot at 2 and 4 µg/mL. Antibody can also be used for immunocytochemistry starting at 1 µg/mL. For immunofluorescence start at 10 µg/mL. Antibody validated: Western Blot in mouse samples; Immunocytochemistry in mouse samples



Western blot analysis of Raptor in L1210...



Immunocytochemistry staining of L1210 ce...



Immunofluorescence of Raptor in L1210 ce...