

---

## Product Datasheet

### ESRP1 Antibody (orb1239153)

**Description**

ESRP1 Antibody

**Species/Host**

Rabbit

**Reactivity**

Human, Mouse, Rat

**Conjugation**

Unconjugated

**Tested Applications**

ELISA, IF, IHC-P, WB

**Immunogen**

RBM35A antibody was raised against a 18 amino acid synthetic peptide near the amino terminus of human RBM35A. The immunogen is located within amino acids 30 - 80 of RBM35A.

**Target**

ESRP1

**Preservatives**

RBM35A Antibody is supplied in PBS containing 0.02% sodium azide.

**Form/Appearance**

Liquid

**Concentration**

1 mg/mL

**Storage**

RBM35A antibody can be stored at 4°C for three months and -20°C, stable for up to one year. As with all antibodies care should be taken to avoid repeated freeze thaw cycles. Antibodies should not be exposed to prolonged high temperatures.

**Note**

For research use only

**Application notes**

RBM35A antibody can be used for detection of RBM35A by Western blot at 0.5 µg/mL. Antibody can also be used for immunohistochemistry starting at 2.5 µg/mL. For immunofluorescence start at 20 µg/mL. Antibody validated: Western Blot in rat samples; Immunohistochemistry in human samples and Immunofluorescence in human samples. All other applications and species not yet tested.

**Isotype**

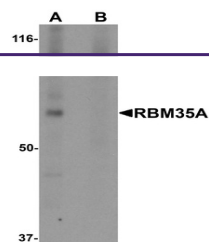
IgG

**Clonality**

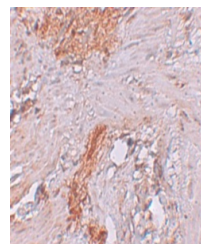
Polyclonal

**Uniprot ID**
[Q6NXG1](#)
**NCBI**
[NP\\_001030087](#)
**Dilution Range**

RBM35A antibody can be used for detection of RBM35A by Western blot at 0.5 µg/mL. Antibody can also be used for immunohistochemistry starting at 2.5 µg/mL. For immunofluorescence start at 20 µg/mL. Antibody validated: Western Blot in rat samples; Immunohistochemistry in human samples

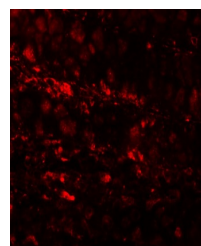


Western blot analysis of RBM35A in rat c...



Immunohistochemistry of RBM35A in human

...



Immunofluorescence of RBM35A in human CO...