
Product Datasheet

Rcan2 Antibody (orb1239150)

Description

Rcan2 Antibody

Species/Host

Rabbit

Reactivity

Human, Mouse, Rat

Conjugation

Unconjugated

Tested Applications

ELISA, IF, IHC-P, WB

Immunogen

RCAN2 antibody was raised against a 14 amino acid synthetic peptide near the center of human RCAN2. The immunogen is located within amino acids 70 - 120 of RCAN2.

Target

Rcan2

Preservatives

RCAN2 Antibody is supplied in PBS containing 0.02% sodium azide.

Form/Appearance

Liquid

Concentration

1 mg/mL

Storage

RCAN2 antibody can be stored at 4°C for three months and -20°C, stable for up to one year. As with all antibodies care should be taken to avoid repeated freeze thaw cycles. Antibodies should not be exposed to prolonged high temperatures.

Note

For research use only

Application notes

RCAN2 antibody can be used for detection of RCAN2 by Western blot at 1 - 2 µg/mL. Antibody can also be used for immunohistochemistry starting at 2.5 µg/mL. For immunofluorescence start at 20 µg/mL. Antibody validated: Western Blot in mouse samples; Immunohistochemistry in mouse samples and Immunofluorescence in mouse samples. All other applications and species not yet tested.

Isotype

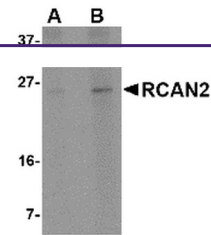
IgG

Clonality

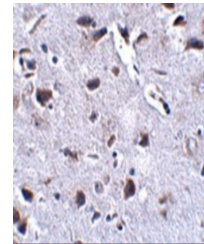
Polyclonal

Uniprot ID
[Q9JHG2](#)
NCBI
[AAH62141](#)
Dilution Range

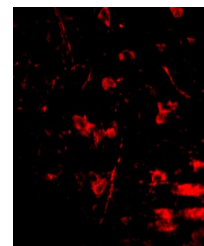
RCAN2 antibody can be used for detection of RCAN2 by Western blot at 1 - 2 µg/mL. Antibody can also be used for immunohistochemistry starting at 2.5 µg/mL. For immunofluorescence start at 20 µg/mL. Antibody validated: Western Blot in mouse samples; Immunohistochemistry in mouse samples



Western blot analysis of RCAN2 in 3T3 ce...



Immunohistochemistry of RCAN2 in mouse b...



Immunofluorescence of RCAN2 in mouse bra...