

---

## Product Datasheet

### REEP2 Antibody (orb1239149)

**Description**

REEP2 Antibody

**Species/Host**

Rabbit

**Reactivity**

Human, Mouse, Rat

**Conjugation**

Unconjugated

**Tested**

ELISA, IF, IHC-P, WB

**Applications**
**Immunogen**

REEP2 antibody was raised against a 15 amino acid synthetic peptide near the center of human REEP2. The immunogen is located within amino acids 150 - 200 of REEP2.

**Target**

REEP2

**Preservatives**

REEP2 Antibody is supplied in PBS containing 0.02% sodium azide.

**Form/Appearance**

Liquid

**Concentration**

1 mg/mL

**Storage**

REEP2 antibody can be stored at 4°C for three months and -20°C, stable for up to one year. As with all antibodies care should be taken to avoid repeated freeze thaw cycles. Antibodies should not be exposed to prolonged high temperatures.

**Note**

For research use only

**Application notes**

REEP2 antibody can be used for detection of REEP2 by Western blot at 1 µg/mL. Antibody can also be used for immunohistochemistry starting at 5 µg/mL. For immunofluorescence start at 20 µg/mL. Antibody validated: Western Blot in mouse samples; Immunohistochemistry in rat samples and Immunofluorescence in rat samples. All other applications and species not yet tested.

**Isotype**

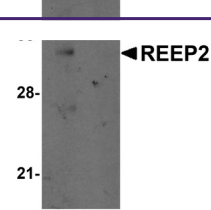
IgG

**Clonality**

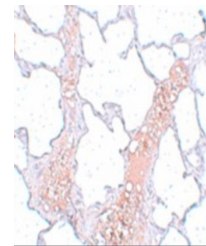
Polyclonal

**Uniprot ID**
[Q9BRK0](#)
**NCBI**
[EAW62139](#)
**Dilution Range**

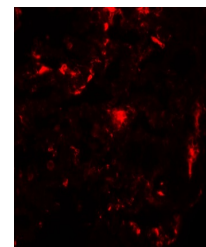
REEP2 antibody can be used for detection of REEP2 by Western blot at 1 µg/mL. Antibody can also be used for immunohistochemistry starting at 5 µg/mL. For immunofluorescence start at 20 µg/mL. Antibody validated: Western Blot in mouse samples; Immunohistochemistry in rat samples and

**A B**


Western blot analysis of REEP2 in mouse ...



Immunohistochemistry of REEP2 in rat lun...



Immunofluorescence of REEP2 in rat lung ...