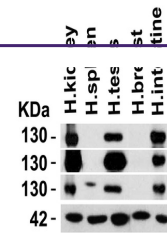


---

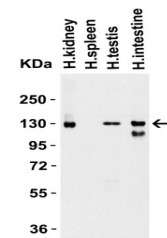
## Product Datasheet

### ACE2 Antibody (orb1239146)

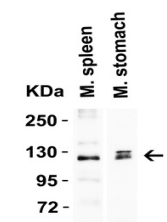
Description	ACE2 Antibody
<b>Species/Host</b>	Rabbit
<b>Reactivity</b>	Human, Mouse, Rat
<b>Conjugation</b>	Unconjugated
<b>Tested Applications</b>	ELISA, IF, IHC-P, WB
<b>Immunogen</b>	Anti-ACE2 antibody (orb1239146) was raised against a peptide corresponding to 17 amino acids near the center of human ACE2. The immunogen is located within amino acids 180 - 230 of ACE2.
<b>Target</b>	ACE2
<b>Preservatives</b>	ACE2 Antibody is supplied in PBS containing 0.02% sodium azide.
<b>Form/Appearance</b>	Liquid
<b>Concentration</b>	1 mg/mL
<b>Storage</b>	ACE2 antibody can be stored at 4°C for three months and -20°C, stable for up to one year. As with all antibodies care should be taken to avoid repeated freeze thaw cycles. Antibodies should not be exposed to prolonged high temperatures.
<b>Note</b>	For research use only
<b>Isotype</b>	IgG
<b>Clonality</b>	Polyclonal
<b>MW</b>	Predicted: 93kD Observed: 130 kD (7 N-linked glycosylation)
<b>Uniprot ID</b>	<a href="#">Q9BYF1</a>
<b>NCBI</b>	<a href="#">NP_068576</a>
<b>Dilution Range</b>	WB: 1-2 µg/mL; IHC: 2 µg/mL; IF: 20 µg/mL. Antibody validated: Western Blot in human, mouse and rat samples; Immunohistochemistry in human samples; Immunofluorescence in human and rat samples. All other applications and species not yet tested.
<b>Expiration Date</b>	12 months from date of receipt.



Independent Antibody Validation (IAV) vi...



Western Blot Validation in Human Tissues...



Western Blot Validation in Mouse Tissues...