

---

## Product Datasheet

### RGPD5 Antibody (orb1239145)

**Description**

RGPD5 Antibody

**Species/Host**

Rabbit

**Reactivity**

Human

**Conjugation**

Unconjugated

**Tested Applications**

ELISA, IF, IHC-P, WB

**Immunogen**

RGPD5 antibody was raised against a 13 amino acid synthetic peptide from near the amino terminus of human RGPD5. The immunogen is located within amino acids 50 - 100 of RGPD5.

**Target**

RGPD5

**Preservatives**

RGPD5 Antibody is supplied in PBS containing 0.02% sodium azide.

**Form/Appearance**

Liquid

**Concentration**

1 mg/mL

**Storage**

RGPD5 antibody can be stored at 4°C for three months and -20°C, stable for up to one year. As with all antibodies care should be taken to avoid repeated freeze thaw cycles. Antibodies should not be exposed to prolonged high temperatures.

**Note**

For research use only

**Application notes**

RGPD5 antibody can be used for detection of RGPD5 by Western blot at 1 µg/mL. Antibody can also be used for immunohistochemistry starting at 10 µg/mL. For immunofluorescence start at 20 µg/mL. Antibody validated: Western Blot in human samples; Immunohistochemistry in human samples and Immunofluorescence in human samples. All other applications and species not yet tested.

**Isotype**

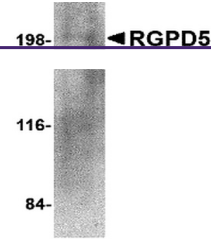
IgG

**Clonality**

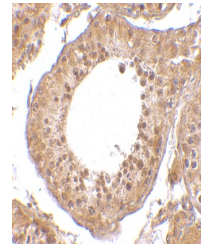
Polyclonal

**Uniprot ID**
[Q99666](#)
**NCBI**
[NP\\_005045](#)
**Dilution Range**

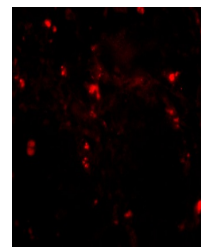
RGPD5 antibody can be used for detection of RGPD5 by Western blot at 1 µg/mL. Antibody can also be used for immunohistochemistry starting at 10 µg/mL. For immunofluorescence start at 20 µg/mL. Antibody validated: Western Blot in human samples; Immunohistochemistry in human samples and



Western blot analysis of RGPD5 in human ...



Immunohistochemistry of RGPD5 in human t...



Immunofluorescence of RGPD5 in human tes...