
Product Datasheet

HMMR Antibody (orb1239142)

Description

HMMR Antibody

Species/Host

Rabbit

Reactivity

Human, Mouse, Rat

Conjugation

Unconjugated

Tested Applications

ELISA, IF, IHC-P, WB

Immunogen

RHAMM antibody was raised against a 18 amino acid synthetic peptide near the amino terminus of human RHAMM. The immunogen is located within amino acids 80 - 130 of RHAMM.

Target

HMMR

Preservatives

RHAMM Antibody is supplied in PBS containing 0.02% sodium azide.

Form/Appearance

Liquid

Concentration

1 mg/mL

Storage

RHAMM antibody can be stored at 4°C for three months and -20°C, stable for up to one year. As with all antibodies care should be taken to avoid repeated freeze thaw cycles. Antibodies should not be exposed to prolonged high temperatures.

Note

For research use only

Application notes

RHAMM antibody can be used for detection of RHAMM by Western blot at 0.5 µg/mL. Antibody can also be used for immunohistochemistry starting at 2.5 µg/mL. For immunofluorescence start at 5 µg/mL. Antibody validated: Western Blot in rat samples; Immunohistochemistry in human samples and Immunofluorescence in human samples. All other applications and species not yet tested.

Isotype

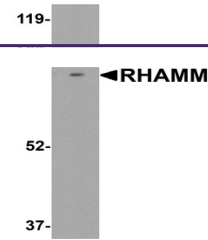
IgG

Clonality

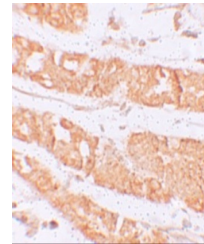
Polyclonal

Uniprot ID
075330
NCBI
NP_036617
Dilution Range

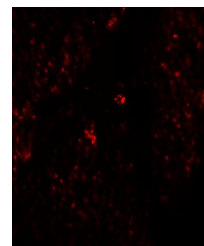
RHAMM antibody can be used for detection of RHAMM by Western blot at 0.5 µg/mL. Antibody can also be used for immunohistochemistry starting at 2.5 µg/mL. For immunofluorescence start at 5 µg/mL. Antibody validated: Western Blot in rat samples; Immunohistochemistry in human samples



Western blot analysis of RHAMM in rat st...



Immunohistochemistry of RHAMM in human S...



Immunofluorescence of RHAMM in human sto...