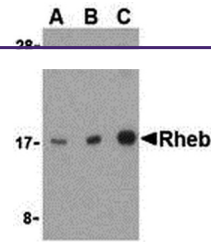
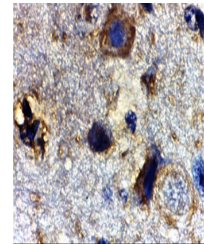

Product Datasheet

RHEB Antibody (orb1239138)

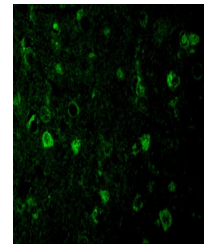
Description	RHEB Antibody
Species/Host	Rabbit
Reactivity	Human, Mouse, Rat
Conjugation	Unconjugated
Tested Applications	ELISA, IF, IHC-P, WB
Immunogen	Rheb antibody was raised against a 15 amino acid synthetic peptide from the middle region of human Rheb. The immunogen is located within amino acids 40 - 90 of Rheb.
Target	RHEB
Preservatives	Rheb Antibody is supplied in PBS containing 0.02% sodium azide.
Form/Appearance	Liquid
Concentration	1 mg/mL
Storage	Rheb antibody can be stored at 4°C for three months and -20°C, stable for up to one year. As with all antibodies care should be taken to avoid repeated freeze thaw cycles. Antibodies should not be exposed to prolonged high temperatures.
Note	For research use only
Application notes	Rheb antibody can be used for the detection of Rheb by Western blot at 1 to 4 µg/mL. Antibody can also be used for immunohistochemistry starting at 2 µg/mL. For immunofluorescence start at 20 µg/mL. Antibody validated: Western Blot in mouse samples; Immunohistochemistry in mouse samples and Immunofluorescence in mouse samples. All other applications and species not yet tested.
Isotype	IgG
Clonality	Polyclonal
MW	19, 20 kDa
Uniprot ID	Q15382
NCBI	AAH16155
Dilution Range	Rheb antibody can be used for the detection of Rheb by Western blot at 1 to 4 µg/mL. Antibody can also be used for immunohistochemistry starting at 2 µg/mL. For immunofluorescence start at 20 µg/mL. Antibody validated: Western Blot in mouse



Western blot analysis of Rheb in mouse brain tissue.



Immunohistochemistry of Rheb in mouse brain tissue.



Immunofluorescence of Rheb in Mouse Brain tissue.