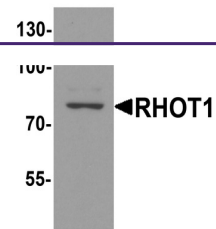
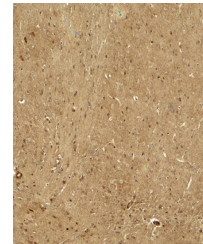

Product Datasheet

RHOT1 Antibody (orb1239136)

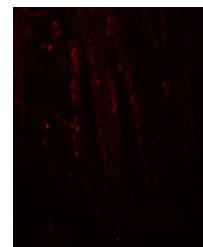
Description	RHOT1 Antibody
Species/Host	Rabbit
Reactivity	Human, Mouse, Rat
Conjugation	Unconjugated
Tested Applications	ELISA, IF, IHC-P, WB
Immunogen	RHOT1 antibody was raised against a 15 amino acid peptide near the amino terminus of human RHOT1. The immunogen is located within amino acids 40 - 90 of RHOT1.
Target	RHOT1
Preservatives	RHOT1 antibody is supplied in PBS containing 0.02% sodium azide.
Form/Appearance	Liquid
Concentration	1 mg/mL
Storage	RHOT1 antibody can be stored at 4°C for three months and -20°C, stable for up to one year.
Note	For research use only
Application notes	RHOT1 antibody can be used for detection of RHOT1 by Western blot at 1 - 2 µg/ml. Antibody can also be used for immunohistochemistry starting at 5 µg/mL. For immunofluorescence start at 20 µg/mL. Antibody validated: Western Blot in rat samples; Immunohistochemistry in mouse samples and Immunofluorescence in mouse samples. All other applications and species not yet tested.
Isotype	IgG
Clonality	Polyclonal
MW	Predicted: 76 kDa Observed: 78 kDa
Uniprot ID	Q8IXI2
NCBI	NP_001028740
Dilution Range	RHOT1 antibody can be used for detection of RHOT1 by Western blot at 1 - 2 µg/ml. Antibody can also be used for immunohistochemistry starting at 5 µg/mL. For immunofluorescence start at 20 µg/mL. Antibody validated: Western Blot in rat samples; Immunohistochemistry in mouse samples and Immunofluorescence in mouse samples. All other applications and species not yet tested.



Western blot analysis of RHOT1 in rat br...



Immunohistochemistry of RHOT in mouse br...



Immunofluorescence of RHOT in mouse brai...