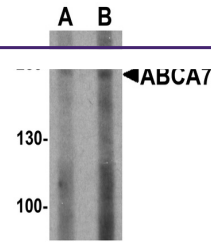
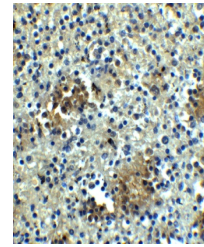

Product Datasheet

ABCA7 Antibody (orb1239133)

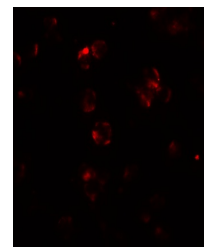
Description	ABCA7 Antibody
Species/Host	Rabbit
Reactivity	Human
Conjugation	Unconjugated
Tested Applications	ELISA, ICC, IF, IHC-P, WB
Immunogen	ABCA7 antibody was raised against an 18 amino acid synthetic peptide near the amino terminus of human ABCA7. The immunogen is located within amino acids 130 - 180 of ABCA7.
Target	ABCA7
Preservatives	ABCA7 Antibody is supplied in PBS containing 0.02% sodium azide.
Form/Appearance	Liquid
Concentration	1 mg/mL
Storage	ABCA7 antibody can be stored at 4°C for three months and -20°C, stable for up to one year. As with all antibodies care should be taken to avoid repeated freeze thaw cycles. Antibodies should not be exposed to prolonged high temperatures.
Note	For research use only
Application notes	ABCA7 antibody can be used for detection of ABCA7 by Western blot at 1 - 2 µg/mL. Antibody can also be used for immunocytochemistry starting at 5 µg/mL and immunohistochemistry starting at 5 µg/mL. For immunofluorescence start at 5 µg/mL. Antibody validated: Western Blot in human samples; Immunohistochemistry in human samples; Immunocytochemistry in human samples and Immunofluorescence in human samples. All other applications and species not yet tested.
Isotype	IgG
Clonality	Polyclonal
MW	Predicted: 236 kDa Observed: 240 kDa
Uniprot ID	Q8IZY2
NCBI	NP_061985
Dilution Range	ABCA7 antibody can be used for detection of ABCA7 by Western blot at 1 - 2 µg/mL. Antibody can also be used for immunocytochemistry starting at 5 µg/mL



Western blot analysis of ABCA7 in 293 ce...



Immunohistochemistry of ABCA7 in human s...



Immunofluorescence of ABCA7 in 293 cells...