
Product Datasheet

RIMS2 Antibody (orb1239130)

Description

RIMS2 Antibody

Species/Host

Rabbit

Reactivity

Human, Mouse, Rat

Conjugation

Unconjugated

Tested Applications

ELISA, IF, IHC-P, WB

Immunogen

Rim2 antibody was raised against a 17 amino acid synthetic peptide near the center of the human Rim2. The immunogen is located within amino acids 250 - 300 of Rim2.

Target

RIMS2

Preservatives

Rim2 Antibody is supplied in PBS containing 0.02% sodium azide.

Form/Appearance

Liquid

Concentration

1 mg/mL

Storage

Rim2 antibody can be stored at 4°C for three months and -20°C, stable for up to one year. As with all antibodies care should be taken to avoid repeated freeze thaw cycles. Antibodies should not be exposed to prolonged high temperatures.

Note

For research use only

Application notes

Rim2 antibody can be used for detection of Rim2 by Western blot at 1 µg/mL. Antibody can also be used for immunohistochemistry starting at 5 µg/mL. For immunofluorescence start at 20 µg/mL. Antibody validated: Western Blot in human samples; Immunohistochemistry in human samples and Immunofluorescence in human samples. All other applications and species not yet tested.

Isotype

IgG

Clonality

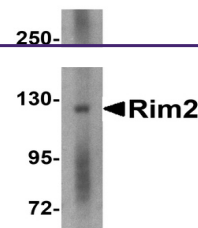
Polyclonal

MW

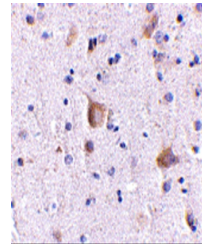
Predicted: 39, 128, 148, 170 kDa Observed: 128 kDa

Uniprot ID
[Q9UQ26](#)
NCBI
[NP_001093587](#)
Dilution Range

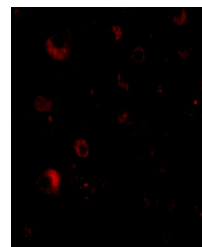
Rim2 antibody can be used for detection of Rim2 by Western blot at 1 µg/mL. Antibody can also be used for immunohistochemistry starting at 5 µg/mL. For immunofluorescence start at 20 µg/mL. Antibody validated: Western Blot in human samples;



Western blot analysis of Rim2 in human b...



Immunohistochemistry of Rim2 in human br...



Immunofluorescence of Rim2 in Human Brai...