
Product Datasheet

RIMS3 Antibody (orb1239129)

Description

RIMS3 Antibody

Species/Host

Rabbit

Reactivity

Human, Mouse

Conjugation

Unconjugated

Tested Applications

ELISA, IF, IHC-P, WB

Immunogen

Rim3 antibody was raised against a 17 amino acid synthetic peptide from near the amino terminus of human Rim3. The immunogen is located within amino acids 60 - 110 of Rim3.

Target

RIMS3

Preservatives

Rim3 Antibody is supplied in PBS containing 0.02% sodium azide.

Form/Appearance

Liquid

Concentration

1 mg/mL

Storage

Rim3 antibody can be stored at 4°C for three months and -20°C, stable for up to one year. As with all antibodies care should be taken to avoid repeated freeze thaw cycles. Antibodies should not be exposed to prolonged high temperatures.

Note

For research use only

Application notes

Rim3 antibody can be used for detection of Rim3 by Western blot at 1 µg/mL. Antibody can also be used for immunohistochemistry starting at 2.5 µg/mL. For immunofluorescence start at 5 µg/mL. Antibody validated: Western Blot in human samples; Immunohistochemistry in human samples and Immunofluorescence in human samples. All other applications and species not yet tested.

Isotype

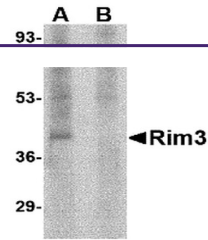
IgG

Clonality

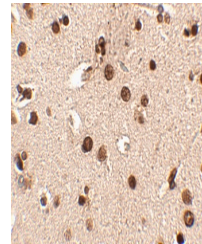
Polyclonal

Uniprot ID
[Q9UJD0](#)
NCBI
[NP_055562](#)
Dilution Range

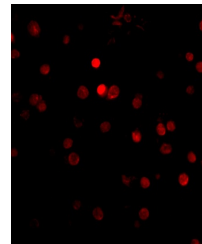
Rim3 antibody can be used for detection of Rim3 by Western blot at 1 µg/mL. Antibody can also be used for immunohistochemistry starting at 2.5 µg/mL. For immunofluorescence start at 5 µg/mL. Antibody validated: Western Blot in human samples; Immunohistochemistry in human samples and



Western blot analysis of Rim3 in human b...



Immunohistochemistry of Rim3 in human br...



Immunofluorescence of rim3 in human brai...