
Product Datasheet

MEX3B Antibody (orb1239125)

Description

MEX3B Antibody

Species/Host

Rabbit

Reactivity

Human, Mouse, Rat

Conjugation

Unconjugated

Tested Applications

ELISA, IF, WB

Immunogen

RKHD3 antibody was raised against a 16 amino acid synthetic peptide from near the center of human RKHD3. The immunogen is located within amino acids 180 - 230 of RKHD3.

Target

MEX3B

Preservatives

RKHD3 Antibody is supplied in PBS containing 0.02% sodium azide.

Form/Appearance

Liquid

Concentration

1 mg/mL

Storage

RKHD3 antibody can be stored at 4°C for three months and -20°C, stable for up to one year. As with all antibodies care should be taken to avoid repeated freeze thaw cycles. Antibodies should not be exposed to prolonged high temperatures.

Note

For research use only

Application notes

RKHD3 antibody can be used for detection of EPAC1 by Western blot at 1 µg/mL. Antibody can also be used for immunofluorescence starting at 20 µg/mL. For immunofluorescence start at 20 µg/mL. Antibody validated: Western Blot in human samples and Immunofluorescence in mouse samples. All other applications and species not yet tested.

Isotype

IgG

Clonality

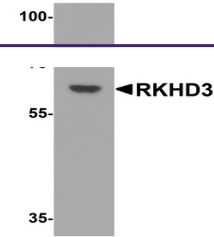
Polyclonal

MW

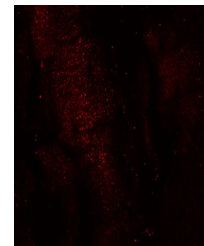
Predicted: 62 kDa Observed: 62 kDa

Uniprot ID
[Q6ZN04](#)
NCBI
[NP_780575](#)
Dilution Range

RKHD3 antibody can be used for detection of EPAC1 by Western blot at 1 µg/mL. Antibody can also be used for immunofluorescence starting at 20 µg/mL. For immunofluorescence start at 20 µg/mL. Antibody validated: Western Blot in human samples and Immunofluorescence in mouse samples. All other



Western blot analysis of RKHD3 in human ...



Immunofluorescence of RKHD3 in mouse ske...