
Product Datasheet

RNASEH2A Antibody (orb1239121)

Description

RNASEH2A Antibody

Species/Host

Rabbit

Reactivity

Human, Mouse, Rat

Conjugation

Unconjugated

Tested Applications

ELISA, ICC, IF, WB

Immunogen

RNase H2A antibody was raised against a 17 amino acid synthetic peptide near the center of human RNase H2A. The immunogen is located within amino acids 190 - 240 of RNase H2A.

Target

RNASEH2A

Preservatives

RNase H2A Antibody is supplied in PBS containing 0.02% sodium azide.

Form/Appearance

Liquid

Concentration

1 mg/mL

Storage

RNase H2A antibody can be stored at 4°C for three months and -20°C, stable for up to one year. As with all antibodies care should be taken to avoid repeated freeze thaw cycles. Antibodies should not be exposed to prolonged high temperatures.

Note

For research use only

Application notes

RNase H2A antibody can be used for detection of RNase H2A by Western blot at 1 µg/mL. Antibody can also be used for immunocytochemistry starting at 2 µg/mL. For immunofluorescence start at 4 µg/mL. Antibody validated: Western Blot in human samples; Immunocytochemistry in human samples and Immunofluorescence in human samples. All other applications and species not yet tested.

Isotype

IgG

Clonality

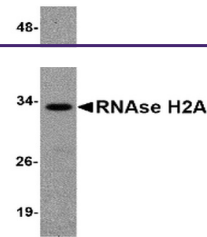
Polyclonal

MW

Predicted: 33 kDa Observed: 33 kDa

Uniprot ID
[O75792](#)
NCBI
[O75792](#)
Dilution Range

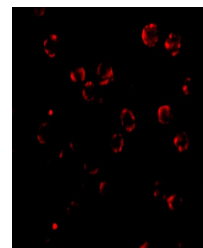
RNase H2A antibody can be used for detection of RNase H2A by Western blot at 1 µg/mL. Antibody can also be used for immunocytochemistry starting at 2 µg/mL. For immunofluorescence start at 4 µg/mL. Antibody validated: Western Blot in human



Western blot analysis of RNase H2A in He...



Immunocytochemistry of RNase H2A in HeLa...



Immunofluorescence of RNase H2A in HeLa...

...