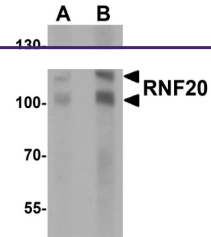
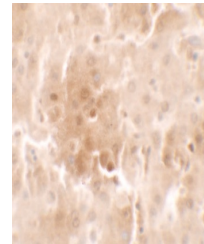

Product Datasheet

RNF20 Antibody (orb1239118)

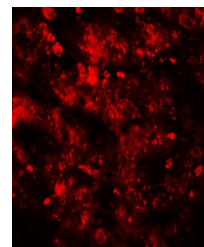
Description	RNF20 Antibody
Species/Host	Rabbit
Reactivity	Human, Mouse
Conjugation	Unconjugated
Tested Applications	ELISA, IF, IHC-P, WB
Immunogen	RNF20 antibody was raised against a 19 amino acid peptide near the amino terminus of human RNF20. The immunogen is located within amino acids 130 - 180 of RNF20.
Target	RNF20
Preservatives	RNF20 Antibody is supplied in PBS containing 0.02% sodium azide.
Form/Appearance	Liquid
Concentration	1 mg/mL
Storage	RNF20 antibody can be stored at 4°C for three months and -20°C, stable for up to one year.
Note	For research use only
Application notes	RNF20 antibody can be used for detection of RNF20 by Western blot at 1 - 2 µg/mL. Antibody validated: Western Blot in human samples; Immunohistochemistry in human samples and Immunofluorescence in human samples. All other applications and species not yet tested.
Isotype	IgG
Clonality	Polyclonal
MW	Predicted: 99, 107 kDa Observed: 100, 110 kDa
Uniprot ID	Q5VTR2
NCBI	NP_062538
Dilution Range	RNF20 antibody can be used for detection of RNF20 by Western blot at 1 - 2 µg/mL. Antibody validated: Western Blot in human samples; Immunohistochemistry in human samples and Immunofluorescence in human samples. All other applications and species not yet tested.
Expiration Date	12 months from date of receipt.



Western blot analysis of RNF20 in human ...



Immunohistochemistry of RNF20 in human l...



Immunofluorescence of RNF20 in human liv...