
Product Datasheet

RNF8 Antibody (orb1239117)

Description

RNF8 Antibody

Species/Host

Rabbit

Reactivity

Human, Mouse, Rat

Conjugation

Unconjugated

Tested Applications

ELISA, IF, WB

Applications
Immunogen

RNF8 antibody was raised against a 14 amino acid synthetic peptide near the carboxy terminus of human RNF8. The immunogen is located within amino acids 330 - 380 of RNF8.

Target

RNF8

Preservatives

RNF8 Antibody is supplied in PBS containing 0.02% sodium azide.

Form/Appearance

Liquid

Concentration

1 mg/mL

Storage

RNF8 antibody can be stored at 4°C for up to one year. As with all antibodies care should be taken to avoid repeated freeze thaw cycles. Antibodies should not be exposed to prolonged high temperatures.

Note

For research use only

Application notes

RNF8 antibody can be used for detection of RNF8 by Western blot at 1 - 2 µg/mL. Antibody can also be used for immunofluorescence starting at 20 µg/mL. For immunofluorescence start at 20 µg/mL. Antibody validated: Western Blot in human samples and Immunofluorescence in rat samples. All other applications and species not yet tested.

Isotype

IgG

Clonality

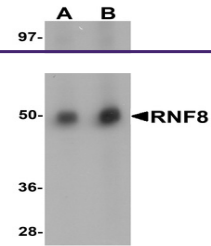
Polyclonal

MW

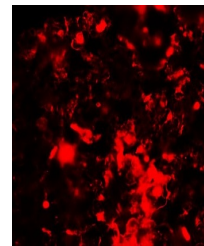
Predicted: 46, 53 kDa Observed: 50 kDa

Uniprot ID
[O76064](#)
NCBI
[NP_003949](#)
Dilution Range

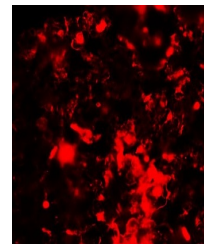
RNF8 antibody can be used for detection of RNF8 by Western blot at 1 - 2 µg/mL. Antibody can also be used for immunofluorescence starting at 20 µg/mL. For immunofluorescence start at 20 µg/mL. Antibody validated: Western Blot in human samples and Immunofluorescence in rat samples. All other applications and species not yet tested.



Western blot analysis of RNF8 in human l...



Immunofluorescence of RNF8 in rat lung t...



Immunofluorescence of RNF8 in Rat Lung t...