
Product Datasheet

ROCK1 Antibody (orb1239116)

Description

ROCK1 Antibody

Species/Host

Rabbit

Reactivity

Human, Mouse, Rat

Conjugation

Unconjugated

Tested Applications

ELISA, ICC, IF, WB

Immunogen

ROCK1 antibody was raised against a 15 amino acid synthetic peptide near the amino terminus of human ROCK1. The immunogen is located within the first 50 amino acids of ROCK1.

Target

ROCK1

Preservatives

ROCK1 Antibody is supplied in PBS containing 0.02% sodium azide.

Form/Appearance

Liquid

Concentration

1 mg/mL

Storage

ROCK1 antibody can be stored at 4°C for three months and -20°C, stable for up to one year. As with all antibodies care should be taken to avoid repeated freeze thaw cycles. Antibodies should not be exposed to prolonged high temperatures.

Note

For research use only

Application notes

ROCK1 antibody can be used for detection of ROCK1 by Western blot at 1 µg/mL. Antibody can also be used for immunocytochemistry starting at 10 µg/mL. For immunofluorescence start at 20 µg/mL. Antibody validated: Western Blot in human samples; Immunocytochemistry in human samples and Immunofluorescence in human samples. All other applications and species not yet tested.

Isotype

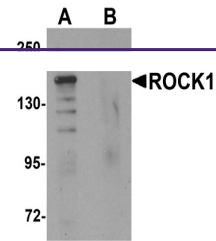
IgG

Clonality

Polyclonal

Uniprot ID
[Q13464](#)
NCBI
[NP_005397](#)
Dilution Range

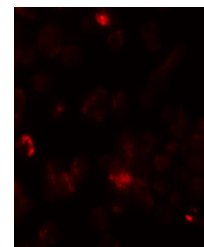
ROCK1 antibody can be used for detection of ROCK1 by Western blot at 1 µg/mL. Antibody can also be used for immunocytochemistry starting at 10 µg/mL. For immunofluorescence start at 20 µg/mL. Antibody validated: Western Blot in human samples; Immunocytochemistry in human samples and



Western blot analysis of ROCK1 in 293 ce...



Immunocytochemistry of ROCK1 in 293 cell...



Immunofluorescence of ROCK1 in 293 cells...