

Product Datasheet

CD180 Antibody (orb1239114)

Description

CD180 Antibody

Species/Host

Rabbit

Reactivity

Human, Mouse

Conjugation

Unconjugated

Tested

ELISA, IHC-P, WB

Applications

Immunogen

RP105 antibody was raised against a 14 amino acid synthetic peptide from near the carboxy terminus of human RP105. The immunogen is located within amino acids 590 - 640 of RP105.

Target

CD180

Preservatives

RP105 Antibody is supplied in PBS containing 0.02% sodium azide.

Form/Appearance

Liquid

Concentration

1 mg/mL

Storage

RP105 antibody can be stored at 4°C for three months and -20°C, stable for up to one year. As with all antibodies care should be taken to avoid repeated freeze thaw cycles. Antibodies should not be exposed to prolonged high temperatures.

Note

For research use only

Application notes

RP105 antibody can be used for the detection of RP105 by Western blot at 0.5 - 1 µg/mL. Despite its predicted molecular weight, RP105 often migrates at 95 - 105 kDa. Antibody can also be used for immunohistochemistry starting at 10 µg/mL. Antibody validated: Western Blot in human samples and Immunohistochemistry in human samples. All other applications and species not yet tested.

Isotype

IgG

Clonality

Polyclonal

Uniprot ID

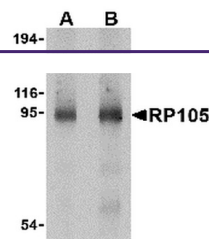
[Q99467](#)

NCBI

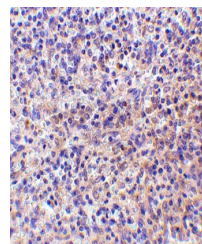
[BAA12019](#)

Dilution Range

RP105 antibody can be used for the detection of RP105 by Western blot at 0.5 - 1 µg/mL. Despite its predicted molecular weight, RP105 often migrates at 95 - 105 kDa. Antibody can also be used for immunohistochemistry starting at 10 µg/mL. Antibody validated: Western Blot in human samples



Western blot analysis of RP105 in human ...



Immunohistochemistry of RP105 in human s...