
Product Datasheet

CD180 Antibody (orb1239113)

Description

CD180 Antibody

Species/Host

Rabbit

Reactivity

Human

Conjugation

Unconjugated

Tested Applications

ELISA, IF, IHC-P, WB

Immunogen

RP105 antibody was raised against a 11 amino acid synthetic peptide from near the amino terminus of human RP105. The immunogen is located within the first 50 amino acids of RP105.

Target

CD180

Preservatives

RP105 Antibody is supplied in PBS containing 0.02% sodium azide.

Form/Appearance

Liquid

Concentration

1 mg/mL

Storage

RP105 antibody can be stored at 4°C for three months and -20°C, stable for up to one year. As with all antibodies care should be taken to avoid repeated freeze thaw cycles. Antibodies should not be exposed to prolonged high temperatures.

Note

For research use only

Application notes

RP105 antibody can be used for the detection of RP105 by Western blot at 0.5 - 1 µg/mL. Despite its predicted molecular weight, RP105 often migrates at 95 - 105 kDa. Antibody can also be used for immunohistochemistry starting at 2 µg/mL. For immunofluorescence start at 20 µg/mL. Antibody validated: Western Blot in human samples; Immunohistochemistry in human samples and Immunofluorescence in human samples. All other applications and species not yet tested.

Isotype

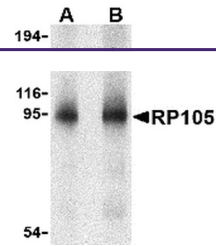
IgG

Clonality

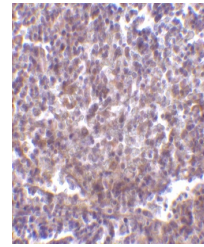
Polyclonal

Uniprot ID
[Q99467](#)
NCBI
[BAA12019](#)
Dilution Range

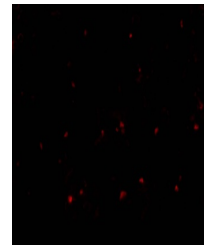
RP105 antibody can be used for the detection of RP105 by Western blot at 0.5 - 1 µg/mL. Despite its predicted molecular weight, RP105 often migrates at 95 - 105 kDa. Antibody can also be used for



Western blot analysis of RP105 in human ...



Immunohistochemistry of RP105 in human s...



Immunofluorescence of RP105 in human spl...