

---

## Product Datasheet

### CD180 Antibody (orb1239112)

**Description**

CD180 Antibody

**Species/Host**

Rabbit

**Reactivity**

Human, Mouse

**Conjugation**

Unconjugated

**Tested Applications**

ELISA, IF, IHC-P, WB

**Immunogen**

RP105 antibody was raised against a 14 amino acid synthetic peptide from near the center of human RP105. The immunogen is located within amino acids 170 - 220 of RP105.

**Target**

CD180

**Preservatives**

RP105 Antibody is supplied in PBS containing 0.02% sodium azide.

**Form/Appearance**

Liquid

**Concentration**

1 mg/mL

**Storage**

RP105 antibody can be stored at 4°C for three months and -20°C, stable for up to one year. As with all antibodies care should be taken to avoid repeated freeze thaw cycles. Antibodies should not be exposed to prolonged high temperatures.

**Note**

For research use only

**Application notes**

RP105 antibody can be used for the detection of RP105 by Western blot at 0.5 - 1 µg/mL. Despite its predicted molecular weight, RP105 often migrates at 95 - 105 kDa. Antibody can also be used for immunohistochemistry starting at 2 µg/mL. For immunofluorescence start at 10 µg/mL. Antibody validated: Western Blot in human samples; Immunohistochemistry in human samples and Immunofluorescence in human samples. All other applications and species not yet tested.

**Isotype**

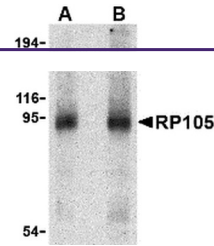
IgG

**Clonality**

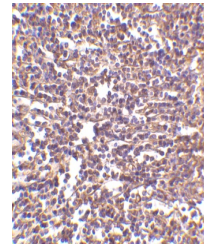
Polyclonal

**Uniprot ID**
[Q99467](#)
**NCBI**
[BAA12019](#)
**Dilution Range**

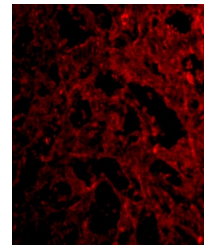
RP105 antibody can be used for the detection of RP105 by Western blot at 0.5 - 1 µg/mL. Despite its predicted molecular weight, RP105 often migrates at 95 - 105 kDa. Antibody can also be used for



Western blot analysis of RP105 in human ...



Immunohistochemistry of RP105 in human s...



Immunofluorescence of RP105 in human spl...