
Product Datasheet

RPAIN Antibody (orb1239111)

Description

RPAIN Antibody

Species/Host

Rabbit

Reactivity

Human, Mouse, Rat

Conjugation

Unconjugated

Tested Applications

ELISA, IHC-P, WB

Immunogen

RPA IP antibody was raised against a 17 amino acid synthetic peptide from near the carboxy terminus of human RPA IP. The immunogen is located within the last 50 amino acids of RPA Interacting Protein.

Target

RPAIN

Preservatives

RPA Interacting Protein Antibody is supplied in PBS containing 0.02% sodium azide.

Form/Appearance

Liquid

Concentration

1 mg/mL

Storage

RPA Interacting Protein antibody can be stored at 4°C for three months and -20°C, stable for up to one year. As with all antibodies care should be taken to avoid repeated freeze thaw cycles. Antibodies should not be exposed to prolonged high temperatures.

Note

For research use only

Application notes

RPA Interacting Protein antibody can be used for detection of RPA Interacting Protein by Western blot at 1 - 2 µg/mL. Antibody can also be used for immunohistochemistry starting at 2.5 µg/mL. Antibody validated: Western Blot in human samples and Immunohistochemistry in mouse samples. All other applications and species not yet tested.

Isotype

IgG

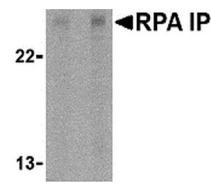
Clonality

Polyclonal

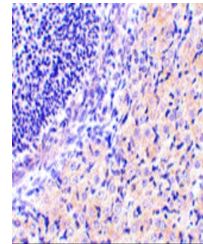
Uniprot ID
[Q86UA6](#)
NCBI
[NP_001028174](#)
Dilution Range

RPA Interacting Protein antibody can be used for detection of RPA Interacting Protein by Western blot at 1 - 2 µg/mL. Antibody can also be used for immunohistochemistry starting at 2.5 µg/mL. Antibody validated: Western Blot in human samples and Immunohistochemistry in mouse samples. All

A B



Western blot analysis of RPA Interacting...



Immunohistochemistry of RPA Interacting ...