
Product Datasheet

RPS6KA1 Antibody (orb1239110)

Description

RPS6KA1 Antibody

Species/Host

Rabbit

Reactivity

Human

Conjugation

Unconjugated

Tested

ELISA, ICC, IF, WB

Applications
Immunogen

RPS6K1 antibody was raised against a 16 amino acid synthetic peptide from near the carboxy terminus of human RPS6K1. The immunogen is located within amino acids 600 - 650 of RPS6K1.

Target

RPS6KA1

Preservatives

RPS6K1 Antibody is supplied in PBS containing 0.02% sodium azide.

Form/Appearance

Liquid

Concentration

1 mg/mL

Storage

RPS6K1 antibody can be stored at 4°C for three months and -20°C, stable for up to one year. As with all antibodies care should be taken to avoid repeated freeze thaw cycles. Antibodies should not be exposed to prolonged high temperatures.

Note

For research use only

Application notes

RPS6K1 antibody can be used for the detection of RPS6K1 by Western blot at 2.5 - 10 µg/mL. Antibody can also be used for immunocytochemistry starting at 10 µg/mL. For immunofluorescence start at 20 µg/mL. Antibody validated: Western Blot in human samples; Immunocytochemistry in human samples and Immunofluorescence in human samples. All other applications and species not yet tested.

Isotype

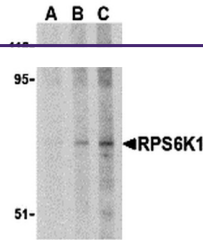
IgG

Clonality

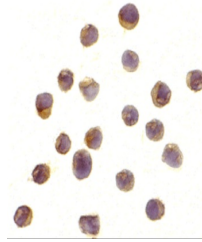
Polyclonal

Uniprot ID
[Q15418](#)
NCBI
[AAC82497](#)
Dilution Range

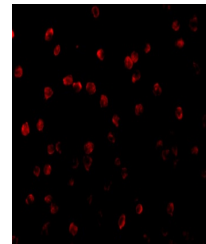
RPS6K1 antibody can be used for the detection of RPS6K1 by Western blot at 2.5 - 10 µg/mL. Antibody can also be used for immunocytochemistry starting at 10 µg/mL. For immunofluorescence start at 20 µg/mL. Antibody validated: Western Blot in human samples; Immunocytochemistry in human samples



Western blot analysis of RPS6K1 in Jurka...



Immunocytochemistry of RPS6K1 in Jurkat ...



Immunofluorescence of RP S6 Kinase in Ju...