
Product Datasheet

RSPO3 Antibody (orb1239107)

Description

RSPO3 Antibody

Species/Host

Rabbit

Reactivity

Human, Mouse

Conjugation

Unconjugated

Tested

ELISA, ICC, IF, WB

Applications
Immunogen

RSPO3 antibody was raised against a 19 amino acid peptide near the carboxy terminus of human RSPO3. The immunogen is located within amino acids 200 - 250 of RSPO3.

Target

RSPO3

Preservatives

RSPO3 antibody is supplied in PBS containing 0.02% sodium azide.

Form/Appearance

Liquid

Concentration

1 mg/mL

Storage

RSPO3 antibody can be stored at 4°C for three months and -20°C, stable for up to one year.

Note

For research use only

Application notes

RSPO3 antibody can be used for detection of RSPO3 by Western blot at 1 - 2 µg/mL. Antibody can also be used for immunocytochemistry starting at 5 µg/mL. For immunofluorescence start at 20 µg/mL. Antibody validated: Western Blot in human samples; Immunocytochemistry in human samples and Immunofluorescence in human samples. All other applications and species not yet tested.

Isotype

IgG

Clonality

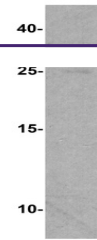
Polyclonal

MW

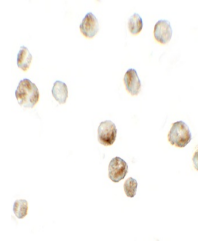
Predicted: 30 kDa Observed: 30 kDa

Uniprot ID
[Q9BXY4](#)
NCBI
[NP_116173](#)
Dilution Range

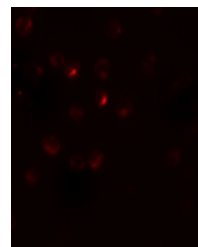
RSPO3 antibody can be used for detection of RSPO3 by Western blot at 1 - 2 µg/mL. Antibody can also be used for immunocytochemistry starting at 5 µg/mL. For immunofluorescence start at 20 µg/mL. Antibody validated: Western Blot in human samples; Immunocytochemistry in human samples and Immunofluorescence in human samples. All other applications and species not yet tested.



Western blot analysis of RSPO3 in 293 ce...



Immunocytochemistry of RSPO3 in 293 cell...



Immunofluorescence of RSPO3 in 293 cells...