
Product Datasheet

RSRC1 Antibody (orb1239106)

Description

RSRC1 Antibody

Species/Host

Rabbit

Reactivity

Human, Mouse, Rat

Conjugation

Unconjugated

Tested Applications

ELISA, IF, IHC-P, WB

Immunogen

RSRC1 antibody was raised against a 19 amino acid synthetic peptide near the carboxy terminus of human RSRC1. The immunogen is located within the last 50 amino acids of RSRC1.

Target

RSRC1

Preservatives

RSRC1 Antibody is supplied in PBS containing 0.02% sodium azide.

Form/Appearance

Liquid

Concentration

1 mg/mL

Storage

RSRC1 antibody can be stored at 4°C for three months and -20°C, stable for up to one year. As with all antibodies care should be taken to avoid repeated freeze thaw cycles. Antibodies should not be exposed to prolonged high temperatures.

Note

For research use only

Application notes

RSRC1 antibody can be used for detection of RSRC1 by Western blot at 1 - 2 µg/mL. Antibody can also be used for immunohistochemistry starting at 5 µg/mL. For immunofluorescence start at 20 µg/mL. Antibody validated: Western Blot in human samples; Immunohistochemistry in rat samples and Immunofluorescence in rat samples. All other applications and species not yet tested.

Isotype

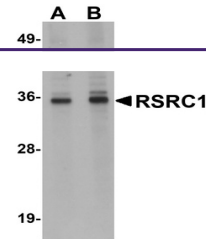
IgG

Clonality

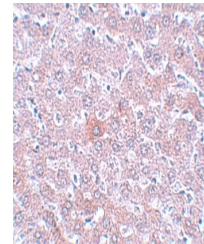
Polyclonal

Uniprot ID
[Q96IZ7](#)
NCBI
[NP_057709](#)
Dilution Range

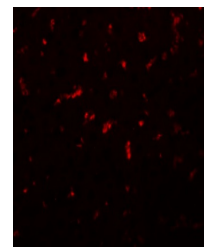
RSRC1 antibody can be used for detection of RSRC1 by Western blot at 1 - 2 µg/mL. Antibody can also be used for immunohistochemistry starting at 5 µg/mL. For immunofluorescence start at 20 µg/mL. Antibody validated: Western Blot in human samples; Immunohistochemistry in rat samples and



Western blot analysis of RSRC1 in HepG2 ...



Immunohistochemistry of RSRC1 in rat liv...



Immunofluorescence of RSRC1 in rat liver...