
Product Datasheet

DDIT4 Antibody (orb1239105)

Description

DDIT4 Antibody

Species/Host

Rabbit

Reactivity

Human, Mouse, Rat

Conjugation

Unconjugated

Tested Applications

ELISA, IF, IHC-P, WB

Immunogen

RTP801 antibody was raised against a 12 amino acid synthetic peptide from near the center of human RTP801. The immunogen is located within amino acids 90 - 140 of RTP801.

Target

DDIT4

Preservatives

RTP801 Antibody is supplied in PBS containing 0.02% sodium azide.

Form/Appearance

Liquid

Concentration

1 mg/mL

Storage

RTP801 antibody can be stored at 4°C for three months and -20°C, stable for up to one year. As with all antibodies care should be taken to avoid repeated freeze thaw cycles. Antibodies should not be exposed to prolonged high temperatures.

Note

For research use only

Application notes

RTP801 antibody can be used for the detection of RTP801 by Western blot at 0.5 - 1 µg/mL. Antibody can also be used for immunohistochemistry starting at 5 µg/mL. Antibody validated: Western Blot in human samples; Immunohistochemistry in mouse samples and Immunofluorescence in mouse samples. All other applications and species not yet tested.

Isotype

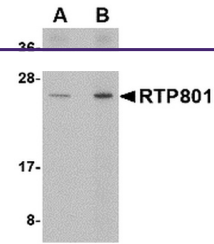
IgG

Clonality

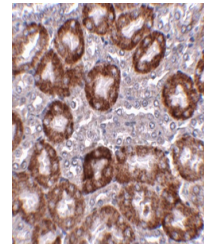
Polyclonal

Uniprot ID
[Q9NX09](#)
NCBI
[NP_061931](#)
Dilution Range

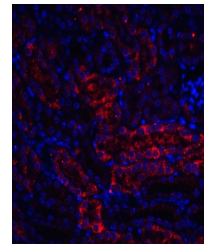
RTP801 antibody can be used for the detection of RTP801 by Western blot at 0.5 - 1 µg/mL. Antibody can also be used for immunohistochemistry starting at 5 µg/mL. Antibody validated: Western Blot in human samples; Immunohistochemistry in mouse samples and Immunofluorescence in mouse samples. All other applications and species not yet tested.



Western blot analysis of RTP801 in human...



Immunohistochemistry of RTP801 in mouse ...



Immunofluorescence of RTP801 in mouse ki...